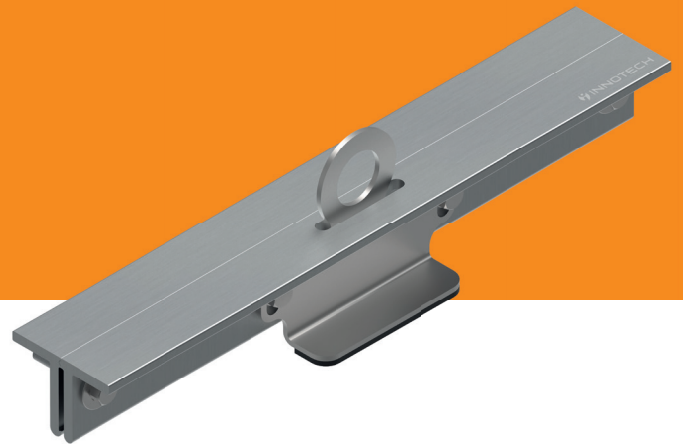


GREAT INHERENT STABILITY

INDUSTRY-31

Crimped clamp



The INDUSTRY-31 crimped clamp from INNOTECH is characterised by its especially high intrinsic stability. The variable setting of the support allows all crimp heights to be covered, and thus ensures the maximum possible flexibility for

- EAP-INDUSTRY-31: Single anchor point for personal safety of 2 people
- SZH-INDUSTRY-31: Intermediate bracket in the lifeline system on a flat or pitched roof
- For double standing seam roofs made of aluminium, steel, and copper
- Simple and rapid installation because of pre-assembled elements

the user on the roof. The pre-assembled delivery guarantees rapid installation, which takes place without roof perforation.

- Installation possible on sliding cleats
- Simple to retrofit at any time
- Certification to the latest state of the art:

EN 795:2012 TYPE A & CEN/TS 16415:2013 (EAP-INDUSTRY-31)
EN 795:2012 TYPE C (SZH-INDUSTRY-31)

INDUSTRY-31

EAP | SINGLE ANCHOR POINT

EAP-INDUSTRY-31

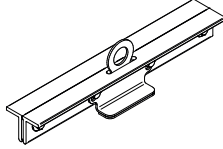
SINGLE ANCHOR POINT WITH ANCHORAGE EYE FOR STANDING SEAM ROOF SYSTEMS (EN 795 A)

Substructure: (double) standing seam roof systems

Material (material thickness): steel (min. 0.5 mm),
aluminium (min. 0.7 mm)

Material: aluminium, stainless steel (AISI 304)

Pre-assembled and does not require roof perforation



EAP-INDUSTRY-31-CU

Substructure: (double) standing seam roof made of copper (at least 0.6 mm)

SZH | INTERMEDIATE BRACKET

SZH-INDUSTRY-31

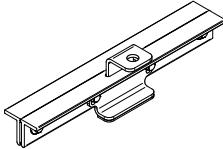
INTERMEDIATE BRACKET IN AIO LIFELINE SYSTEM FOR STANDING SEAM ROOF SYSTEMS (EN 795 C)

Substructure: (double) standing seam roof systems

Material (material thickness): steel (min. 0.5 mm),
aluminium (min. 0.7 mm)

Material: aluminium, stainless steel (AISI 304)

Pre-assembled and does not require roof perforation



EAP-INDUSTRY-31-CU

Substructure: (double) standing seam roof made of copper (at least 0.6 mm)