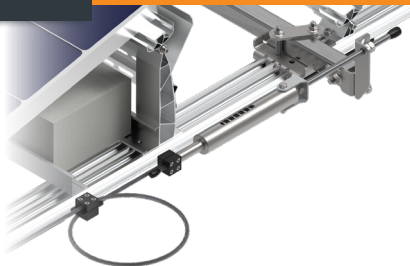
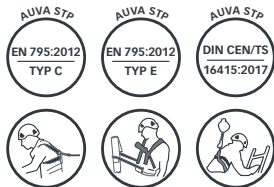


SOPV-AERO-AIO



- CZ – POZOR:** Práce s výrobkem INNOTECH je povolena teprve po kompletním přečtení a porozumění bezpečnostních pokynů a návodu k montáži.
- DE – ACHTUNG:** Die Verwendung des INNOTECH-Produkts ist erst zulässig, nachdem die Sicherheitshinweise und Montageanleitung vollständig gelesen und verstanden wurden.
- DK – GIV AGT:** Det er først tilladt at anvende INNOTECH-produktet, efter du har læst og forstået sikkerhedshenvisningerne og monteringsvejledningen.
- EN – ATTENTION:** Use of the INNOTECH product is permitted only after the safety instructions and instruction manual in the respective language have been read.
- ES – ATENCIÓN:** Solo se autorizará el uso del producto INNOTECH una vez que se hayan leído y entendido completamente las indicaciones de seguridad y las instrucciones de montaje.
- FR – ATTENTION :** L'utilisation du produit INNOTECH n'est autorisée qu'après avoir intégralement lu et compris les consignes de sécurité et la notice de montage.
- HU – FIGYELEM:** Az INNOTECH termék használatá csak akkor engedhető meg, ha a biztonsági utasításokat és az összeszerelési utasításokat teljes mértékben elolvasta és megértette.
- IT – ATTENZIONE:** L'utilizzo del prodotto INNOTECH è permesso solo previa lettura completa e comprensione integrale delle avvertenze di sicurezza e le istruzioni di montaggio.
- NL – ATTENTIE:** Dit INNOTECH-product mag pas worden gebruikt nadat u de gebruikershandleiding en de montagehandleiding volledig heeft gelezen en begrepen.
- PL – UWAGA:** Używanie produktu INNOTECH jest dozwolone dopiero po zapoznaniu się z wszystkimi zasadami bezpieczeństwa i instrukcją montażu.
- PT – ATENÇÃO:** O uso do produto INNOTECH apenas é permitido depois de terem sido lidas e compreendidas na totalidade as indicações de segurança e o manual de montagem.
- SK – POZOR:** Použitie výrobku INNOTECH je povolené až vtedy, keď si úplne prečítate a pochopíte bezpečnostné pokyny a montážny návod.
- SL – POZOR:** Uporaba izdelkov INNOTECH je dovoljena šele po tem, ko preberete in so vam jasne vse varnostne opombe in navodila za montažo.
- SV – O B S :** INNOTECH-produkten får inte användas, förrän säkerhets- och monteringsinstruktionerna har lästs igenom och förståtts fullständigt.
- TR – DİKKAT:** INNOTECH ürününün kullanımına ancak güvenlik uyarılar ve montaj talimatı tamamen okunup anlaşıldıktan sonra izin verilir.
- ZH – 注意:** 只有在完全阅读并理解安全提示和装配说明书之后,才允许使用INNOTECH产品。



1**2**

3

3

10

4

13

5

15

6

17

7

19

8

20

9

22

10

24

11

29

12

30

13

32

14

35

15

37

16

39

17

43

18

51

19

52

20

55



[mm]

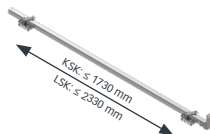


SOPV-AERO-AIO-SET-10

 AISI 304
 AISI 316
 STAINLESS
 STEEL

 St
 STEEL

INNOTECH AIO-ENDS



SOPV-AERO-AIO-SET-11

 AISI 304
 AISI 316
 STAINLESS
 STEEL

 St
 STEEL

INNOTECH AIO-ENDS

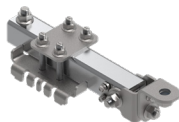


SOPV-AERO-AIO-SET-20

 AISI 304
 AISI 316
 STAINLESS
 STEEL

 St
 STEEL

INNOTECH AIO-SZH



SOPV-AERO-AIO-SET



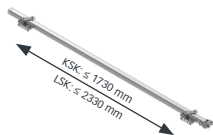
[mm]



SOPV-AERO-AIO-SET-30

AISI 304
AISI 316
STAINLESS
STEELSt
STEEL

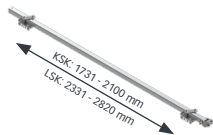
INNOTECH AIO-EDLE / -SZH



SOPV-AERO-AIO-SET-31

AISI 304
AISI 316
STAINLESS
STEELSt
STEEL

INNOTECH AIO-EDLE / -SZH



SOPV-AERO-AIO-SET



AISI 304
AISI 316
STAINLESS
STEEL

St
STEEL

SOPV-AERO-AIO-SET-40

KSK  SOPV-AERO-AIO-SET-10



AISI 304
AISI 316
STAINLESS
STEEL

St
STEEL

SOPV-AERO-AIO-SET-41

KSK  SOPV-AERO-AIO-SET-11

LSK  SOPV-AERO-AIO-SET-10
 SOPV-AERO-AIO-SET-11



SOPV-AERO-AIO-SET 

2



SOPV-AERO-VB-SET-10

AISI 304
AISI 316
STAINLESS
STEEL



SOPV-AERO-VB-SET

2



AIO-SEIL-30

AISI 304
AISI 316
STAINLESS
STEEL



AIO-SEIL

2



AIO-ENDS-10

AISI 304
AISI 316
STAINLESS
STEEL

Al
ALUMINUM



AIO-ENDS

2



SHOCK

2



AIO-SZH

2



AIO-EDLE



AIO-GLEIT-10-A4



AISI 304
AISI 316
STAINLESS
STEEL



AIO-GLEIT-20-A4

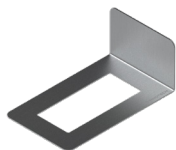


AISI 304
AISI 316
STAINLESS
STEEL



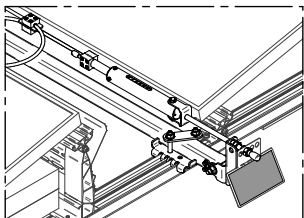
AIO-GLEIT 

2



BARRIER-Z31

2


INNTECH SOPV-AIO

EN 795:2012 TYP C
EN 795:2012 TYP E
DIN CEN/TS 16415:2017
CE 0408



№



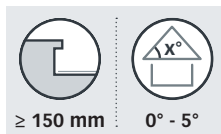
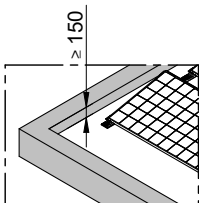
18-00-02-Aufkleber-C

SOPV-AERO-AIO-TYP

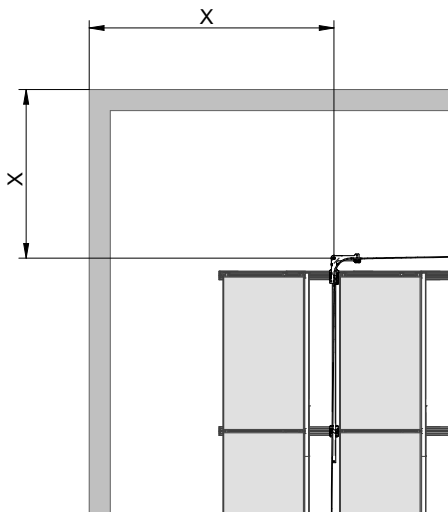
3



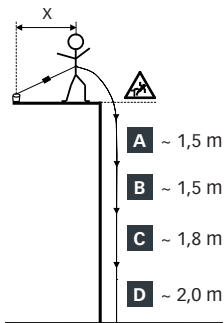
[mm]



! 19 < 150 mm



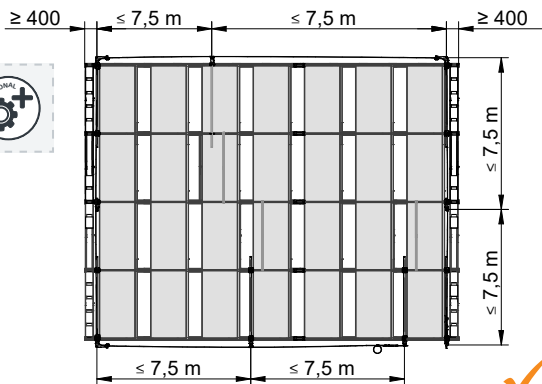
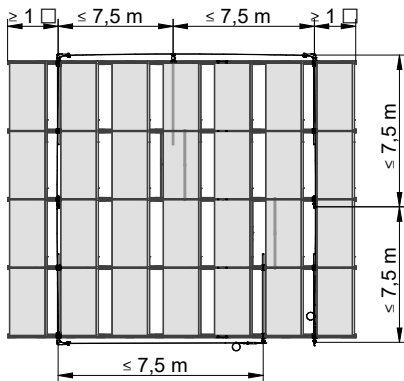
X =  **AUVA,
DGUV, Suva**

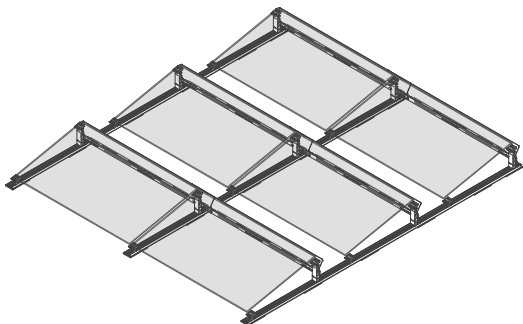


A	PSA + Falldämpfer <i>PPE + shock absorber</i>	~ 1,50 m
B	Seilauslenkung <i>Cable deflection</i>	~ 1,50 m
C	Körpergröße <i>Body height</i>	~ 1,80 m
D	Sicherheitsabstand <i>Safety distance</i>	~ 2,00 m
	Mindestfallhöhe <i>Minimum fall height</i>	~ 6,80 m

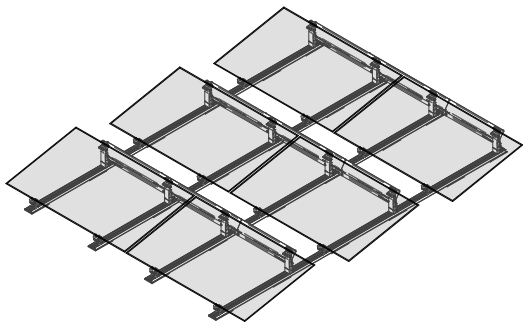


[mm]





KSK $\geq 3x$
Basisschiene

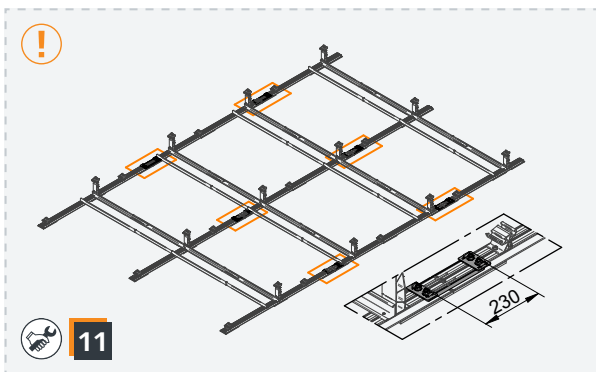
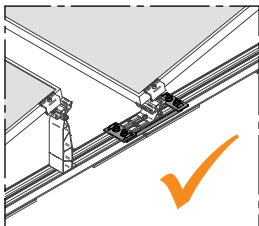
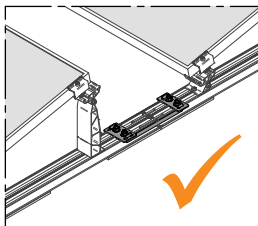
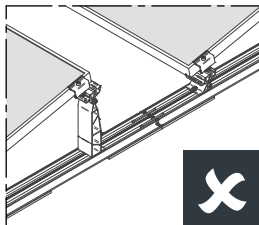
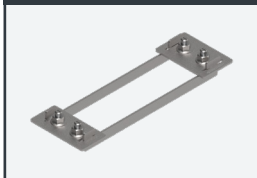


LSK $\geq 4x$
Basisschiene

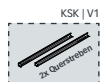


[mm]

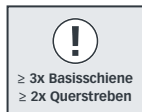
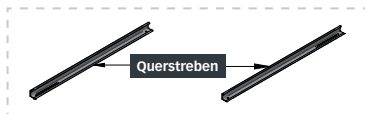
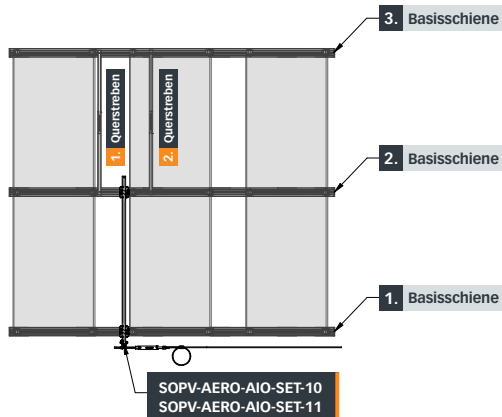
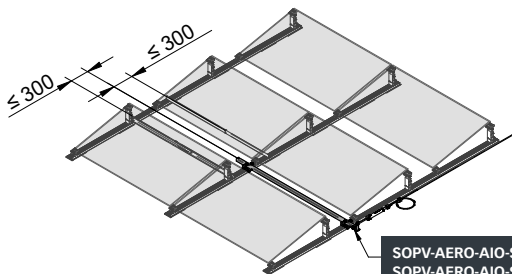
SOPV-AERO-VB-SET-10

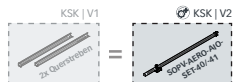


5

KSK
V1

[mm]



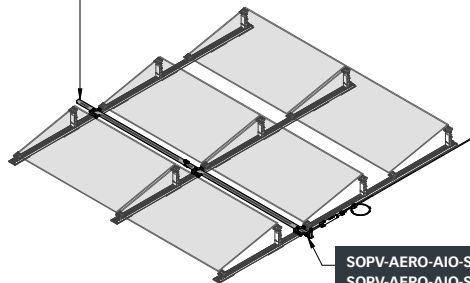


KSK
V2



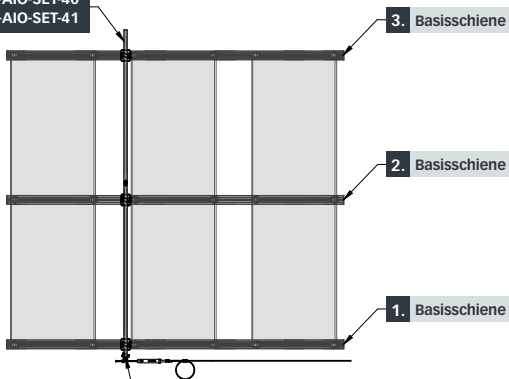
[mm]

SOPV-AERO-AIO-SET-40
SOPV-AERO-AIO-SET-41



SOPV-AERO-AIO-SET-10
SOPV-AERO-AIO-SET-11

SOPV-AERO-AIO-SET-40
SOPV-AERO-AIO-SET-41

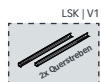


3. Basisschiene

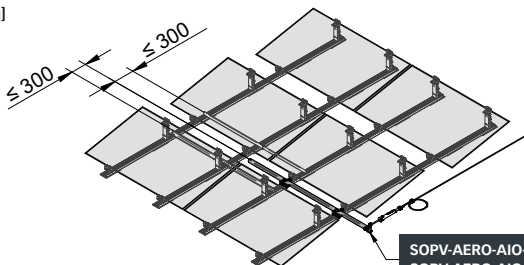
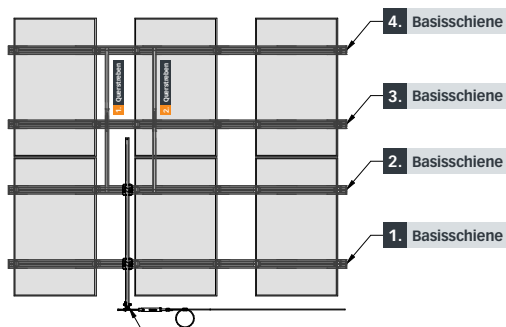
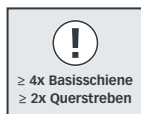
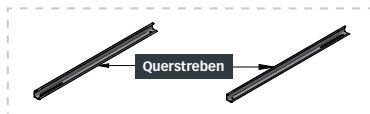
2. Basisschiene

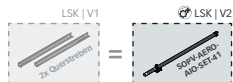
1. Basisschiene

SOPV-AERO-AIO-SET-10
SOPV-AERO-AIO-SET-11

LSK
V1

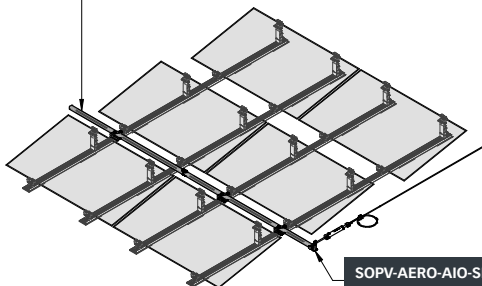
[mm]

SOPV-AERO-AIO-SET-10
SOPV-AERO-AIO-SET-11SOPV-AERO-AIO-SET-10
SOPV-AERO-AIO-SET-11

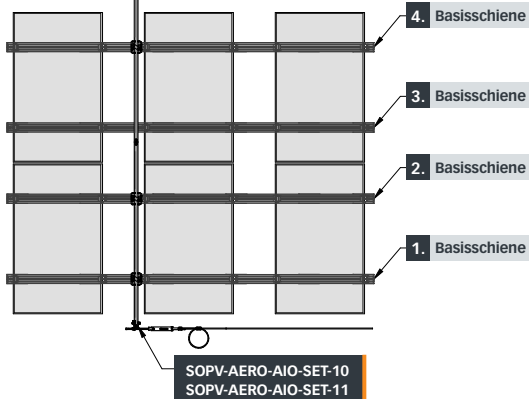
LSK
V2

[mm]

SOPV-AERO-AIO-SET-41

SOPV-AERO-AIO-SET-10
SOPV-AERO-AIO-SET-11

SOPV-AERO-AIO-SET-41



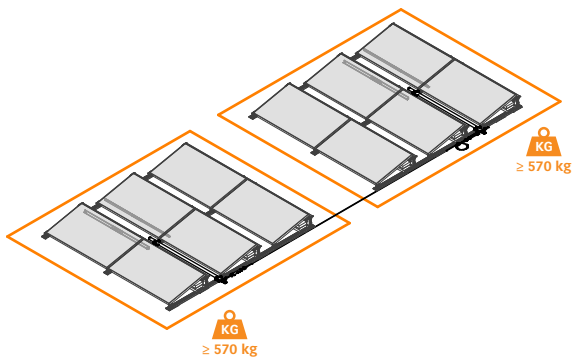
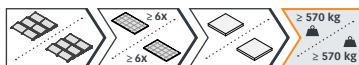
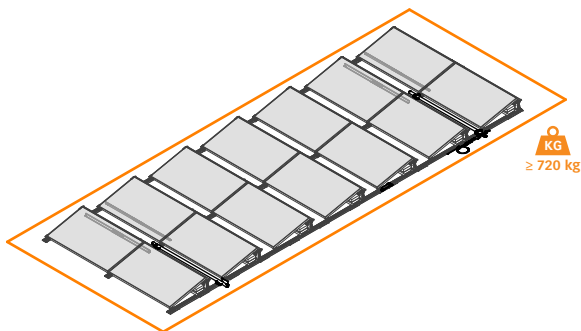
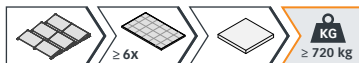
4. Basisschiene

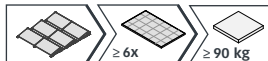
3. Basisschiene

2. Basisschiene

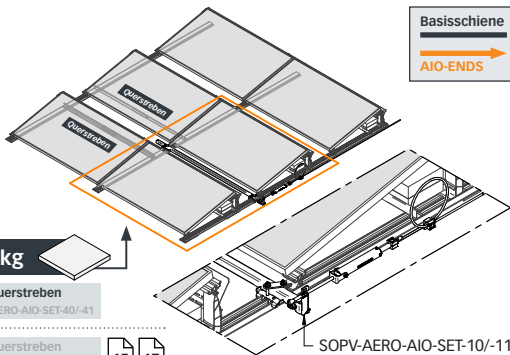
1. Basisschiene

SOPV-AERO-AIO-SET-10
SOPV-AERO-AIO-SET-11





Basisschiene

AIO-ENDS


≥ 90 kg

+

≥ 2x Querstreben

SOPV-AERO-AIO-SET-40/-41


≥ 2x Querstreben

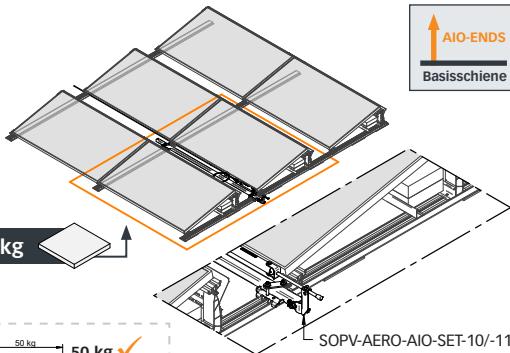
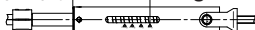
SOPV-AERO-AIO-SET-40/-41
15
KSK17
LSK

SOPV-AERO-AIO-SET-10/-11

AIO-ENDS-10

50 kg

50 kg ✓



≥ 90 kg

AIO-ENDS

Basisschiene

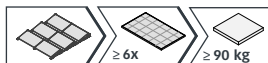
AIO-ENDS-10

50 kg

50 kg ✓



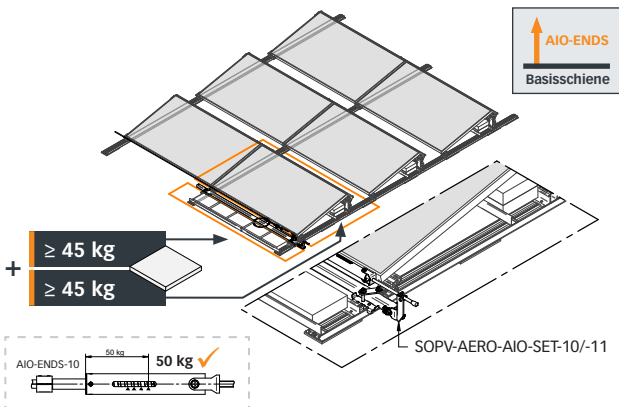
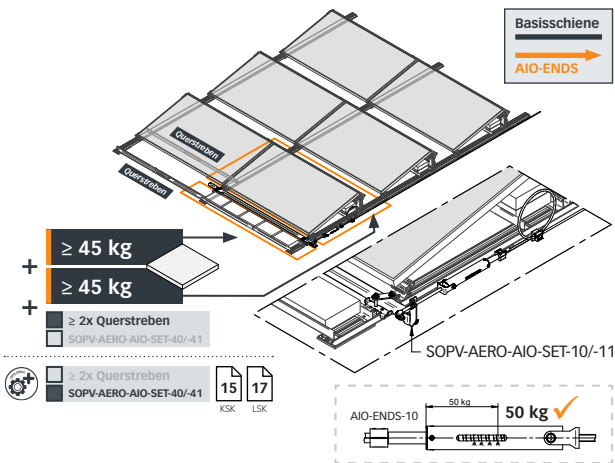
SOPV-AERO-AIO-SET-10/-11

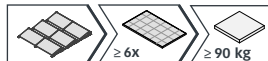


ENDS



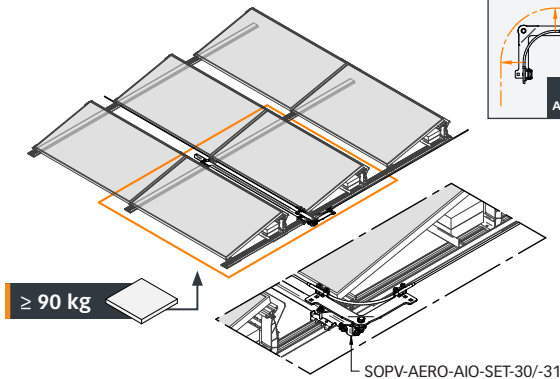
Basisschiene



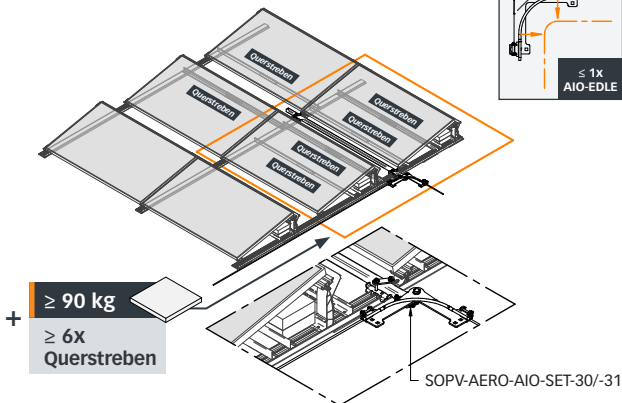
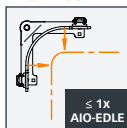


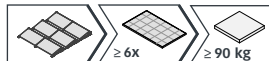
EDLE

OUTSIDE CORNER



INSIDE CORNER

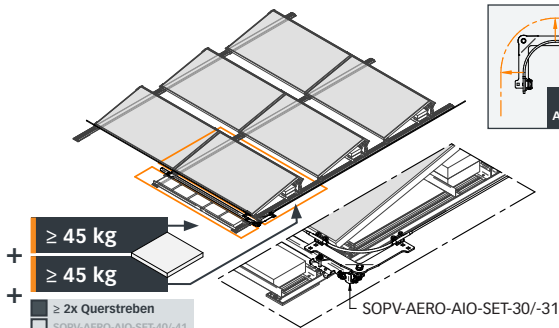




EDLE



OUTSIDE CORNER



$\geq 2x$ Querstreben
 SOPV-AERO-AIO-SET-40/-41

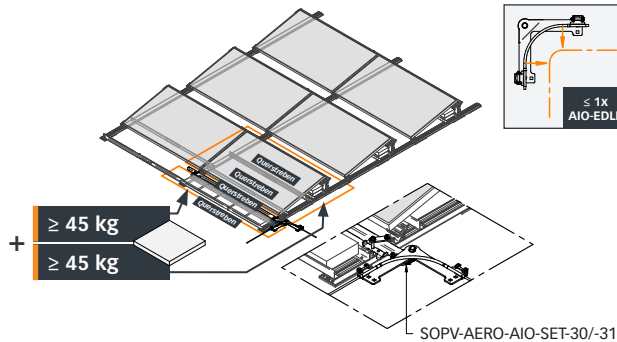
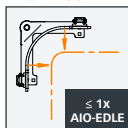
15

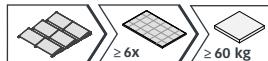
17

KSK

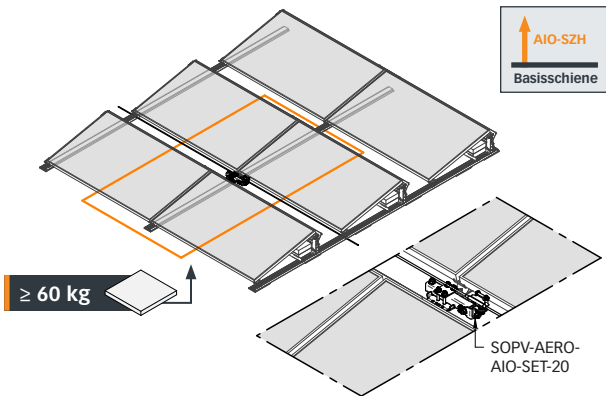
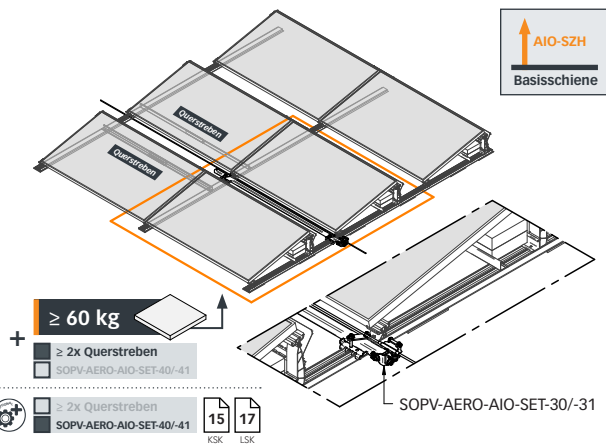
LSK

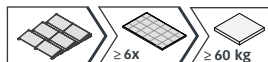
INSIDE CORNER



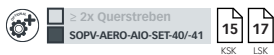
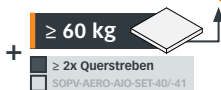
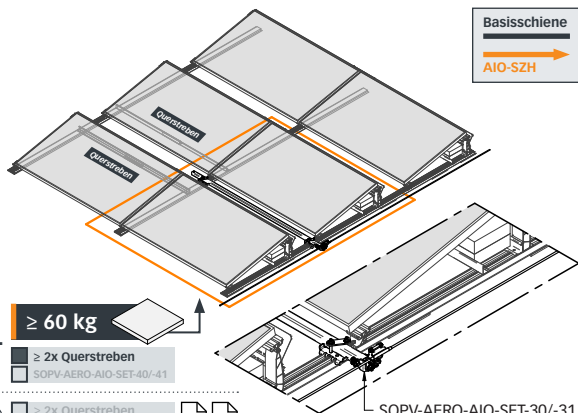


SZH

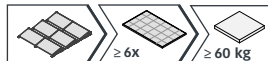




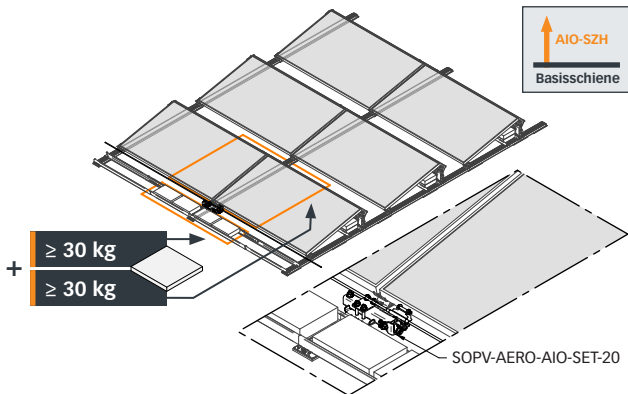
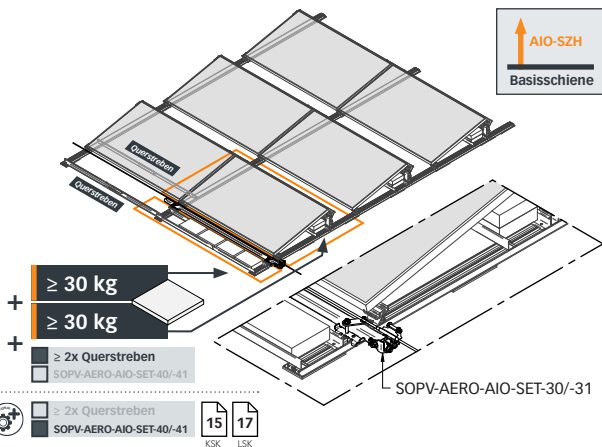
SZH

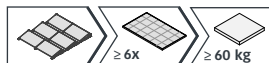


SOPV-AERO-AIO-SET-30/-31



SZH



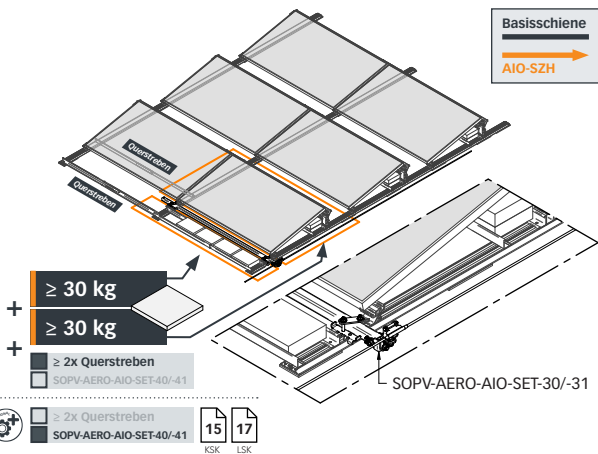


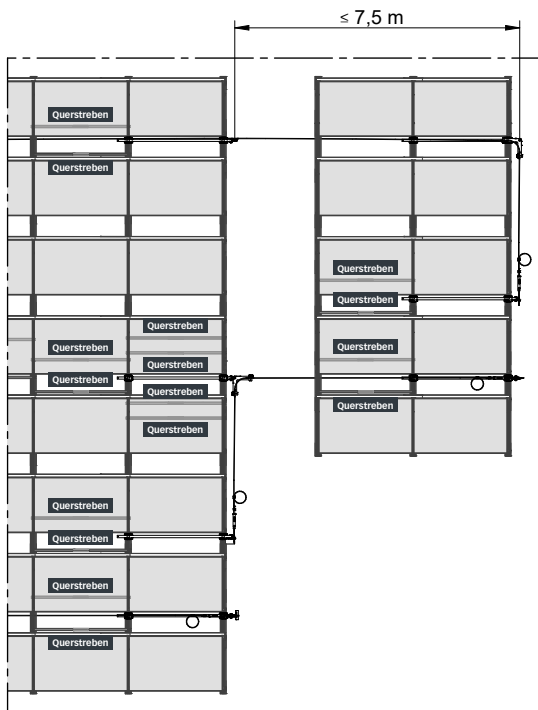
SZH



Basisschiene



AIO-SZH




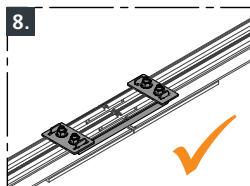
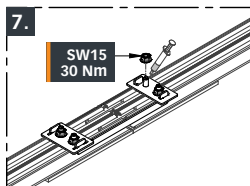
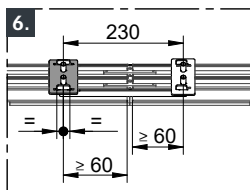
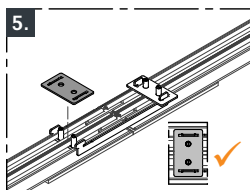
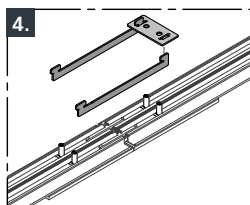
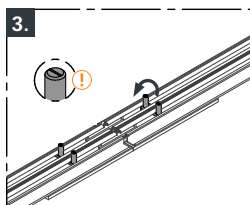
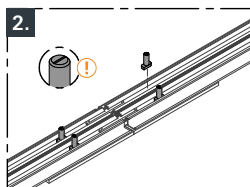
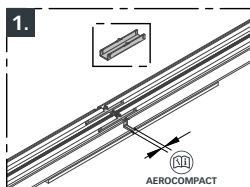


15



30

[mm]

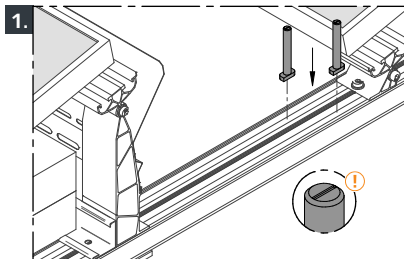




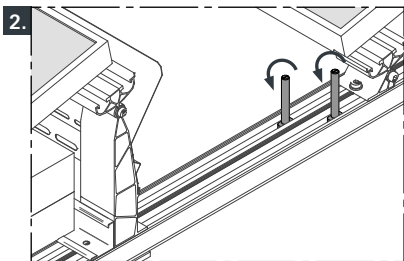
SOPV-AERO-AIO-SET-10/-11
SOPV-AERO-AIO-SET-20
SOPV-AERO-AIO-SET-30/-31
SOPV-AERO-AIO-SET-40/-41



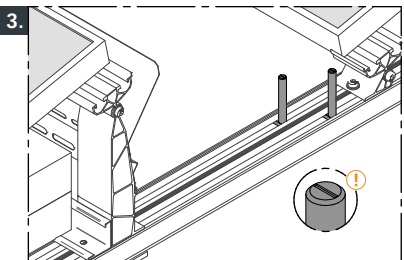
1.



2.



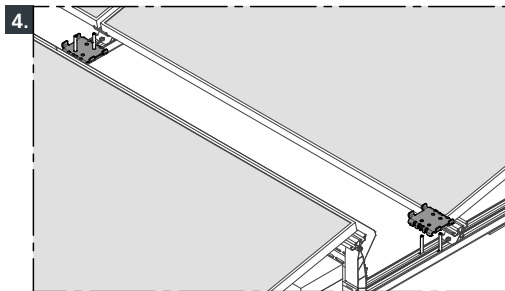
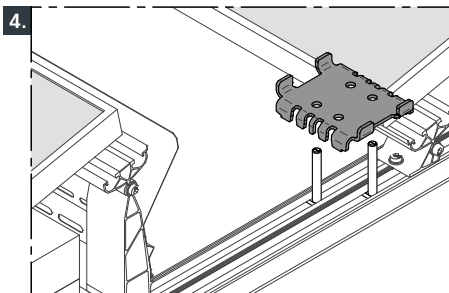
3.





SOPV-AERO-AIO-SET-10/-11
SOPV-AERO-AIO-SET-20
SOPV-AERO-AIO-SET-30/-31
SOPV-AERO-AIO-SET-40/-41

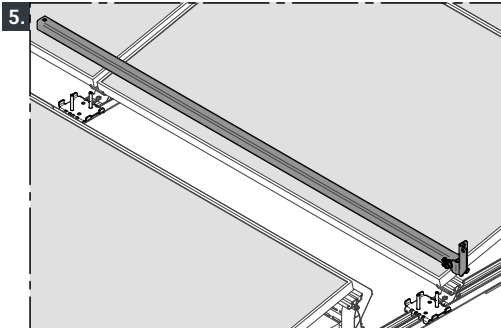
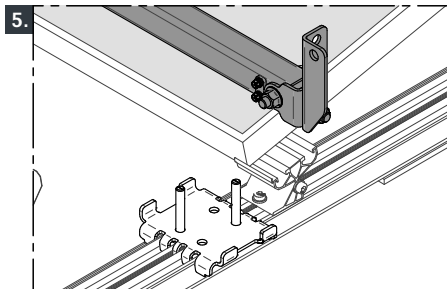
4.





SOPV-AERO-AIO-SET-10/-11
SOPV-AERO-AIO-SET-20
SOPV-AERO-AIO-SET-30/-31
SOPV-AERO-AIO-SET-40/-41

5.





SOPV-AERO-AIO-SET-10/-11

SOPV-AERO-AIO-SET-20

SOPV-AERO-AIO-SET-30/-31

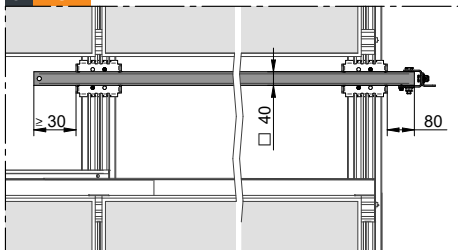
SOPV-AERO-AIO-SET-40/-41

5.

[mm]

KSK

5. KSK

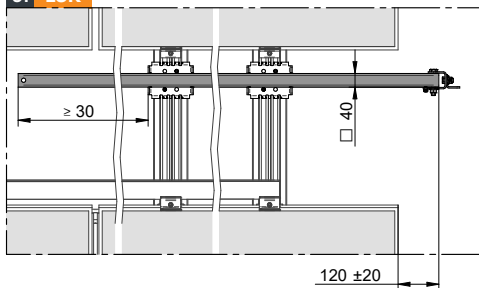


5.

[mm]

LSK

5. LSK

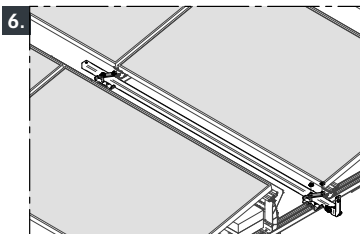
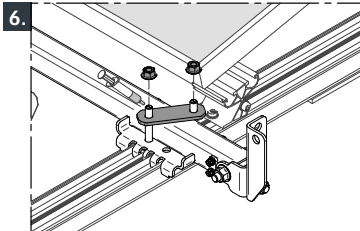




SOPV-AERO-AIO-SET-10/-11
 SOPV-AERO-AIO-SET-20
 SOPV-AERO-AIO-SET-30/-31
 SOPV-AERO-AIO-SET-40/-41

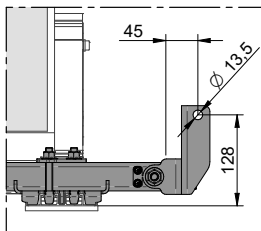
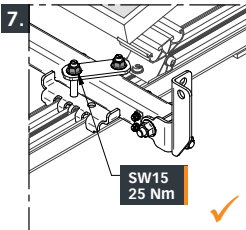
6.

[mm]



7.

[mm]



15



25



COMPONENTS
 AIO-...



SET
-20

SOPV-AERO-AIO-SET-10/-11
 SOPV-AERO-AIO-SET-20
 SOPV-AERO-AIO-SET-30/-31
 SOPV-AERO-AIO-SET-40/-41

1.
4.

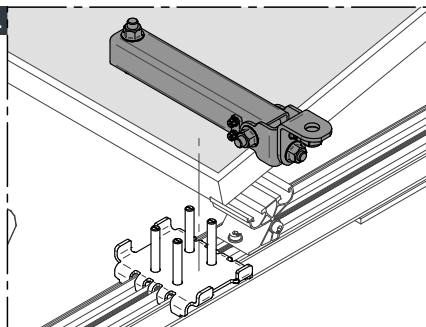
31

32

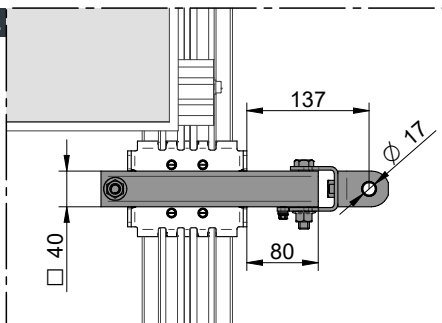
5.

[mm]

5.

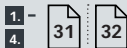


5.

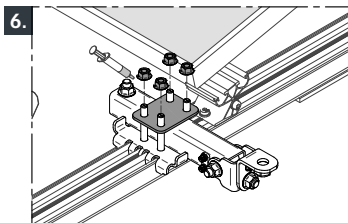




SOPV-AERO-AIO-SET-10/-11
 SOPV-AERO-AIO-SET-20
 SOPV-AERO-AIO-SET-30/-31
 SOPV-AERO-AIO-SET-40/-41



6.



7.

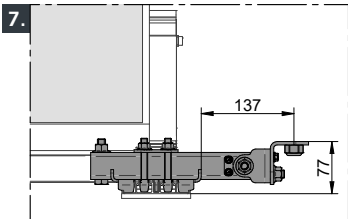
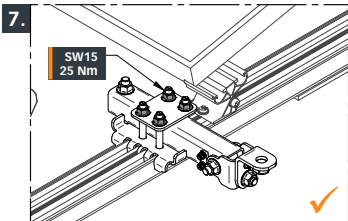
[mm]



15

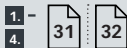


25



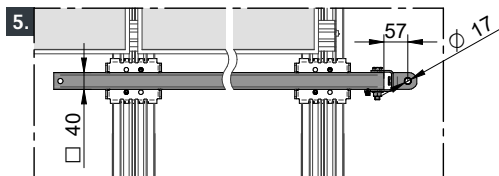
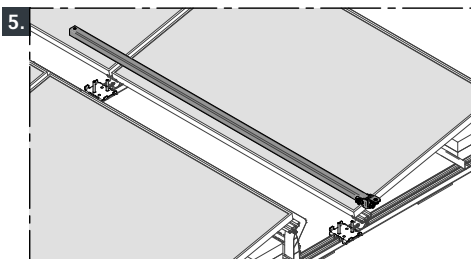
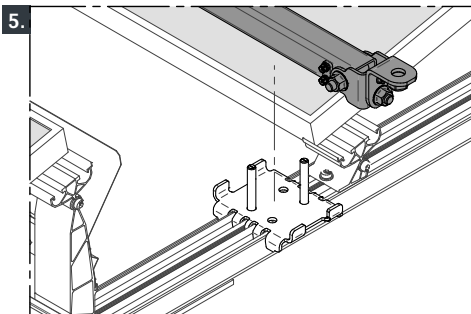


SOPV-AERO-AIO-SET-10/-11
 SOPV-AERO-AIO-SET-20
 SOPV-AERO-AIO-SET-30/-31
 SOPV-AERO-AIO-SET-40/-41



5.

[mm]



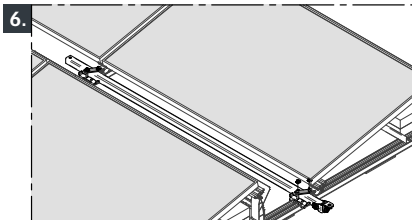
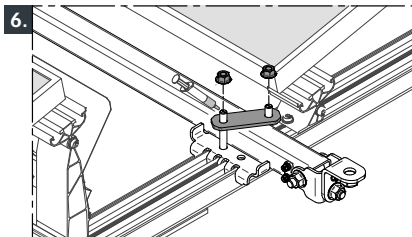


SOPV-AERO-AIO-SET-10/11
 SOPV-AERO-AIO-SET-20
 SOPV-AERO-AIO-SET-30/31
 SOPV-AERO-AIO-SET-40/41

1. -
 4. 31 32

6.

[mm]



7.

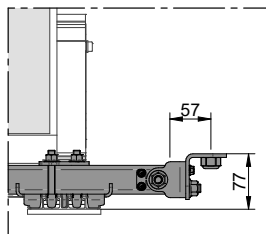
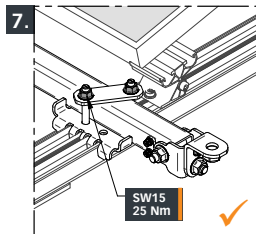
[mm]



15



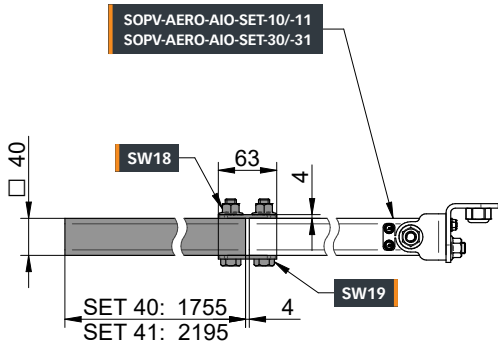
25





SOPV-AERO-AIO-SET-10/-11
 SOPV-AERO-AIO-SET-20
 SOPV-AERO-AIO-SET-30/-31
 SOPV-AERO-AIO-SET-40/-41

[mm]

**SOPV-AERO-AIO-SET-40**

- ☞ SOPV-AERO-EAP-SET-10
- ☞ SOPV-AERO-EAP-SET-30

SOPV-AERO-AIO-SET-41

- ☞ SOPV-AERO-EAP-SET-10
- ☞ SOPV-AERO-EAP-SET-11
- ☞ SOPV-AERO-EAP-SET-30
- ☞ SOPV-AERO-EAP-SET-31



SOPV-AERO-AIO-SET-10/-11
 SOPV-AERO-AIO-SET-20
 SOPV-AERO-AIO-SET-30/-31
 SOPV-AERO-AIO-SET-40/-41



[mm]



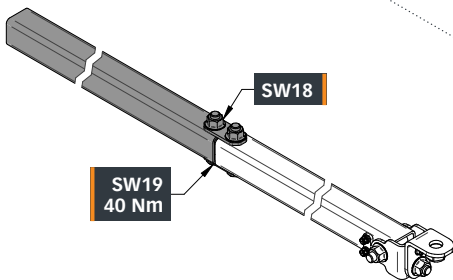
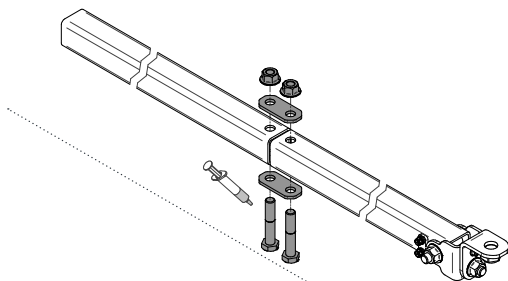
19



40

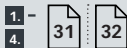


18



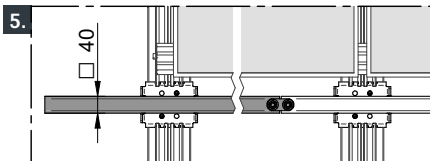
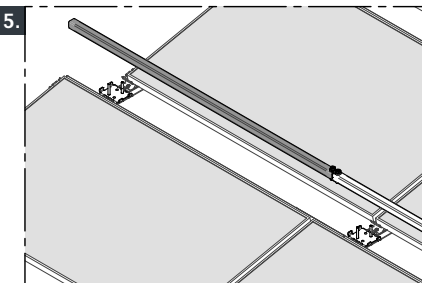
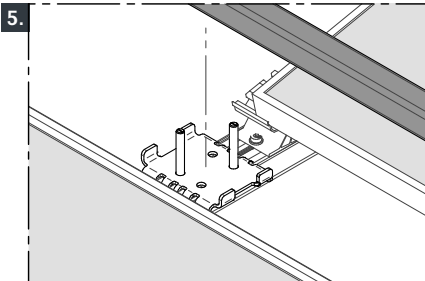


SOPV-AERO-AIO-SET-10/-11
 SOPV-AERO-AIO-SET-20
 SOPV-AERO-AIO-SET-30/-31
 SOPV-AERO-AIO-SET-40/-41



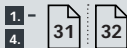
5.

[mm]



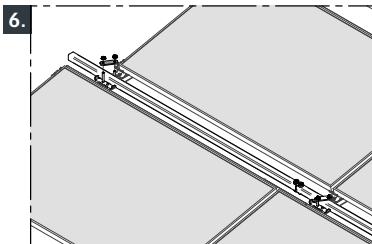
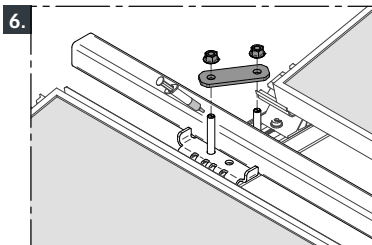


SOPV-AERO-AIO-SET-10/-11
 SOPV-AERO-AIO-SET-20
 SOPV-AERO-AIO-SET-30/-31
 SOPV-AERO-AIO-SET-40/-41

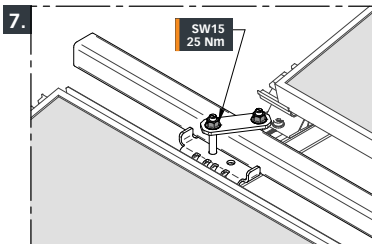


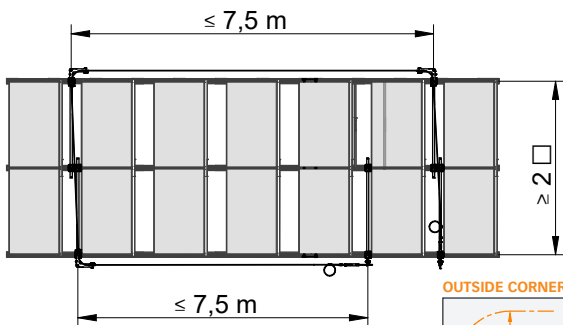
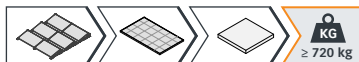
6.

[mm]



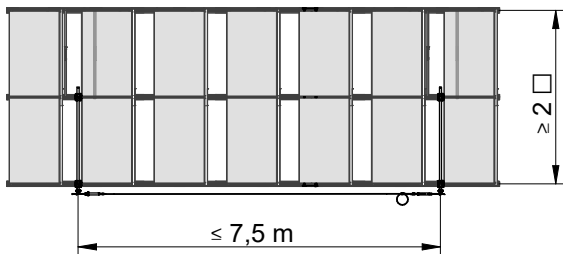
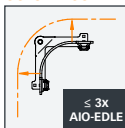
7.



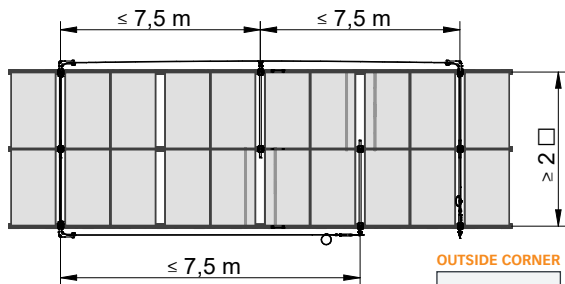
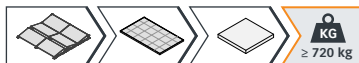


2x SHOCK-10

OUTSIDE CORNER

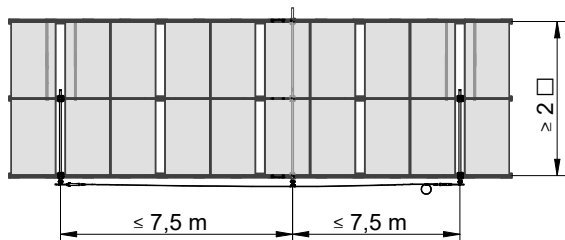


1x SHOCK-10

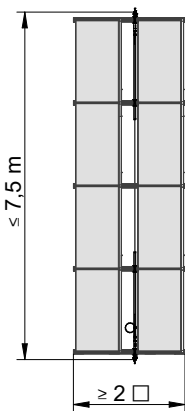
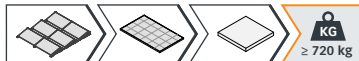


2x SHOCK-10

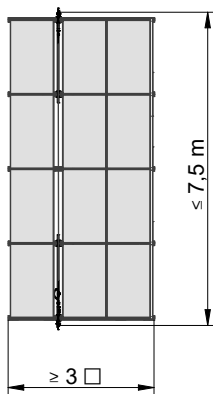
OUTSIDE CORNER



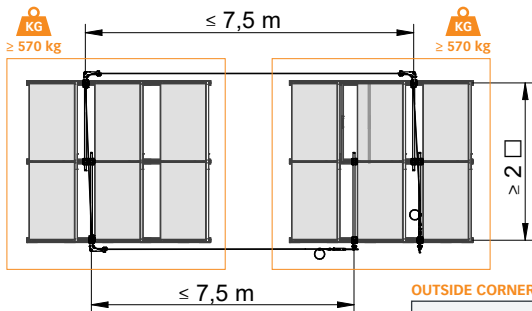
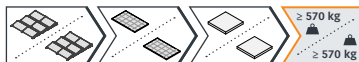
1x SHOCK-10



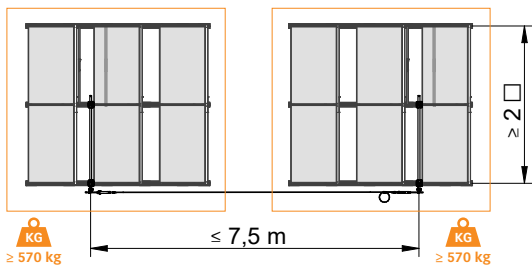
1x SHOCK-10



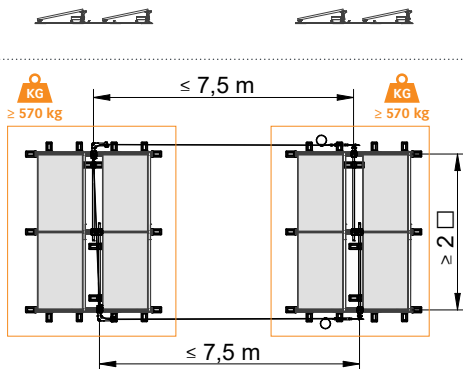
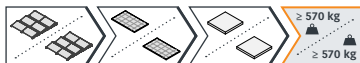
1x SHOCK-10



2x SHOCK-10



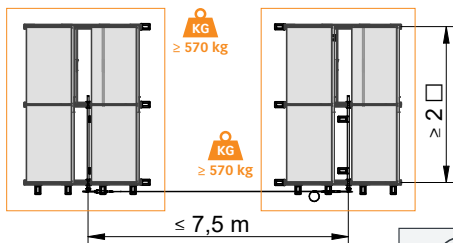
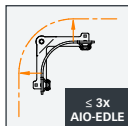
1x SHOCK-10



2x SHOCK-10

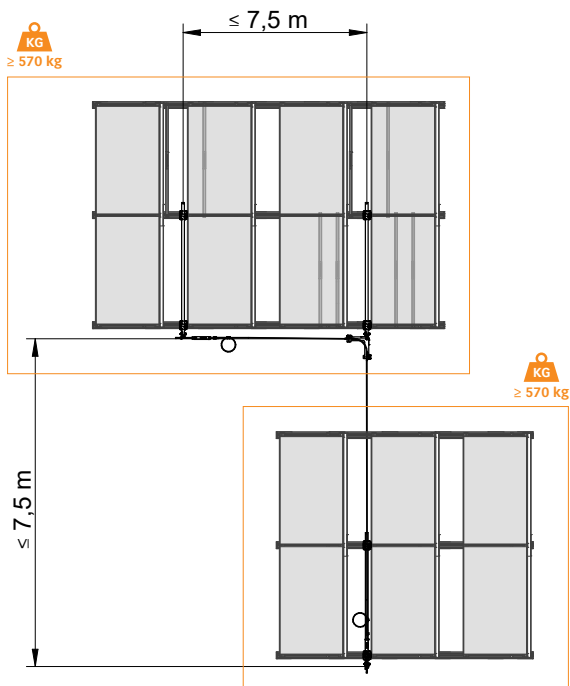
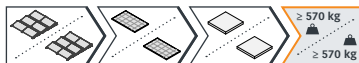


OUTSIDE CORNER



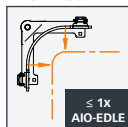
1x SHOCK-10

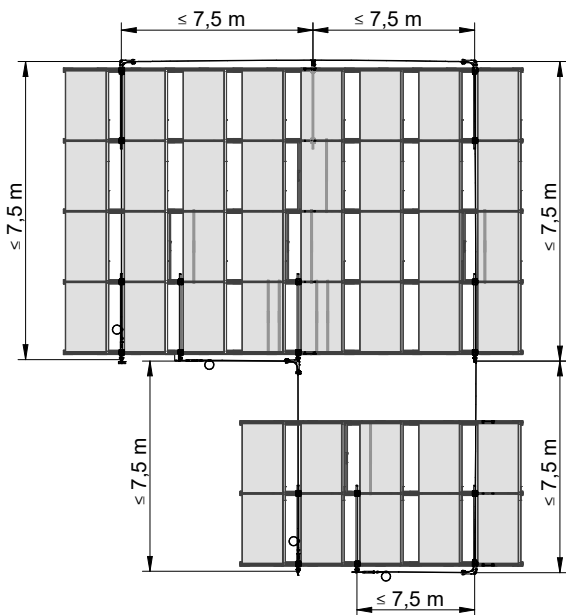
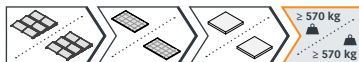




2x SHOCK-10

INSIDE CORNER



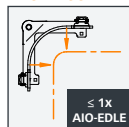


OUTSIDE CORNER

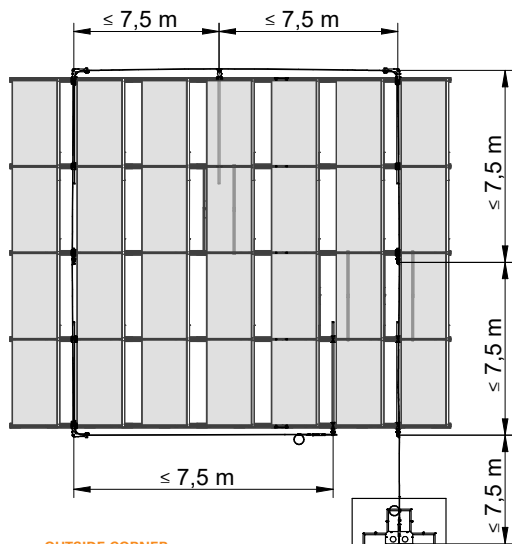
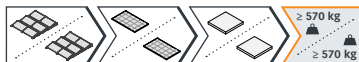


2x SHOCK-10

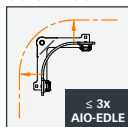
INSIDE CORNER



2x SHOCK-10



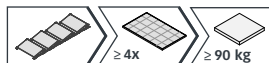
OUTSIDE CORNER



VARIO-45

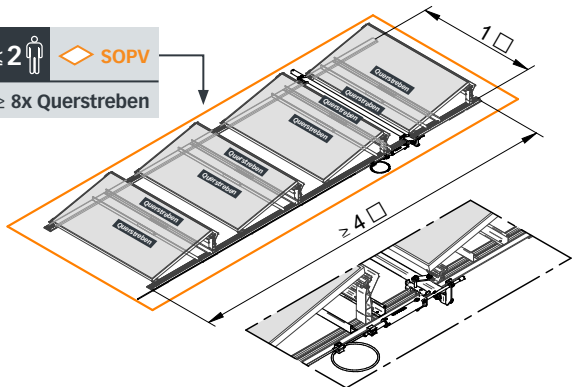


2x SHOCK-10

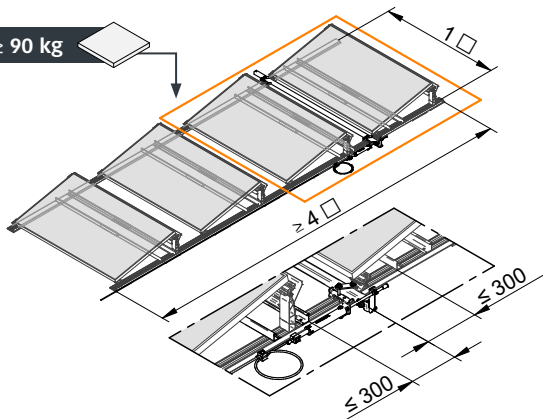


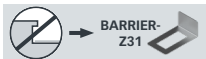
[mm]

≤ 2   SOPV
 $\geq 8x$ Querstreben

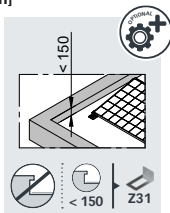


≥ 90 kg 

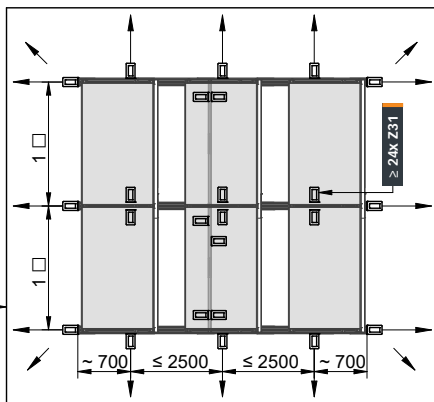
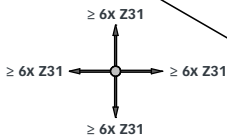
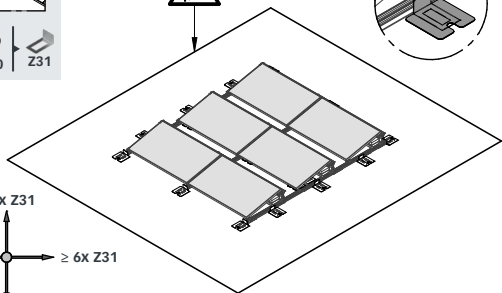
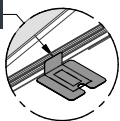


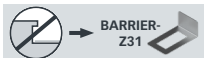


[mm]

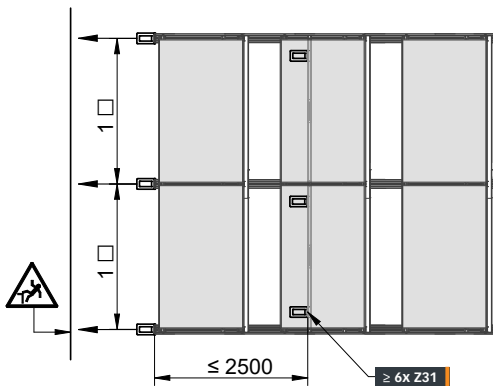
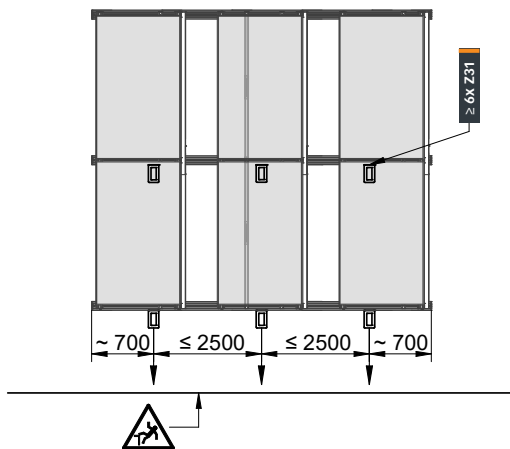


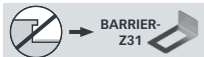
Z31



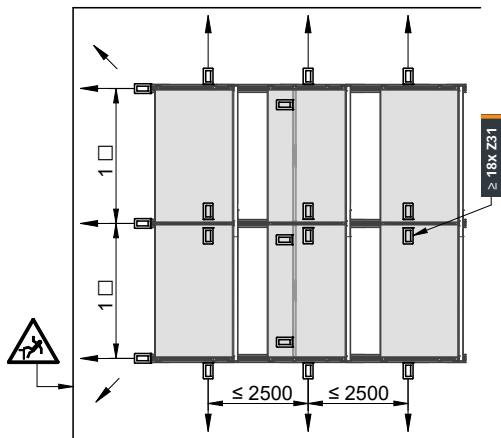
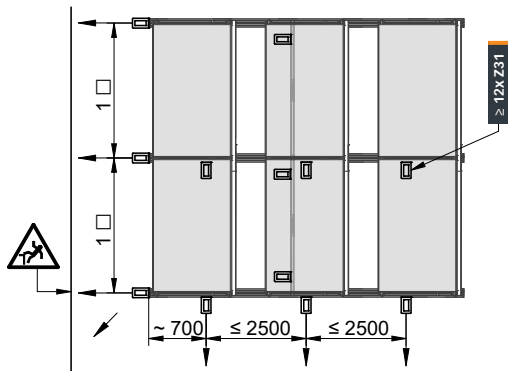


[mm]





[mm]



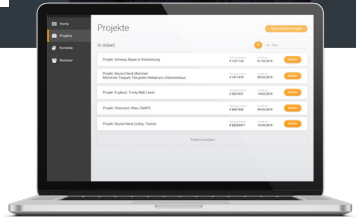
INNOTECH WEB-APP

INNO|doc

Simple. Clear. Document.



www.innotech.at/de/innodoc



INNOTECH Arbeitsschutz GmbH

Laizing 10, A-4656 Kirchham

T: +43 7619 22122-0

office@innotech.at | www.innotech.at



SOPV-AERO-AIO
www.innotech.at