



Guardrail system  
**BARRIER**

**Escape route**

Guardrail system for escape routes



+43 7619 22 1 22 - 0  
+49 271 23 41 94 - 0  
+43 564 16 9 042 - 0

office@innotech.at  
www.innotech.at

Laizing 10  
A 4656 Kirchham



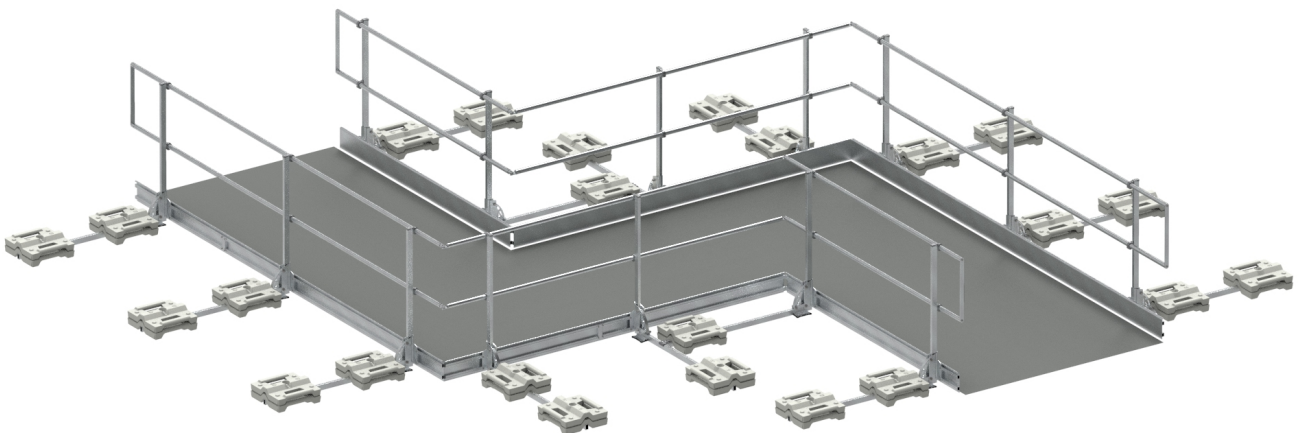
## BARRIER-ESCAPE-ROUTE

### Guardrail system for escape routes

The BARRIER ESCAPE ROUTE guardrail system is used wherever a prescribed route out of the danger zone has to be created so that persons can leave it safely. Regardless whether it is a case of straight runs, or whether corner layouts must be created, the guardrail system ensures optimum safety. Depending on the construction circumstances, the Vario escape route system and the concrete slab escape route system provide two guardrail system variants held by superimposed load. The BARRIER ESCAPE ROUTE guardrail system was designed to ensure simple installation.

#### BENEFITS

- Certified solution for implementing an escape route which complies with standards.
- Vario escape route system provides individual setting of escape route width, depending on the number of persons escaping.
- Space-saving concrete slab escape route system variant, using customer-supplied concrete slabs to provide superimposed load.
- Simple to retrofit, because the system uses superimposed loads.



Currently no updates for this product



## Technical product description

The guardrail system consisting of aluminium and stainless steel impresses because of its weather resistance and robustness. The guardrail, together with the various individual components, such as the specially developed foot units, booms, posts, concrete weights, and the toe board, combine to create a harmonised system. Depending on which system variant is used, there is the option of a space-saving or individually adjustable escape route width.



### TECHNICAL BENEFITS

#### Escape route compliant with standards

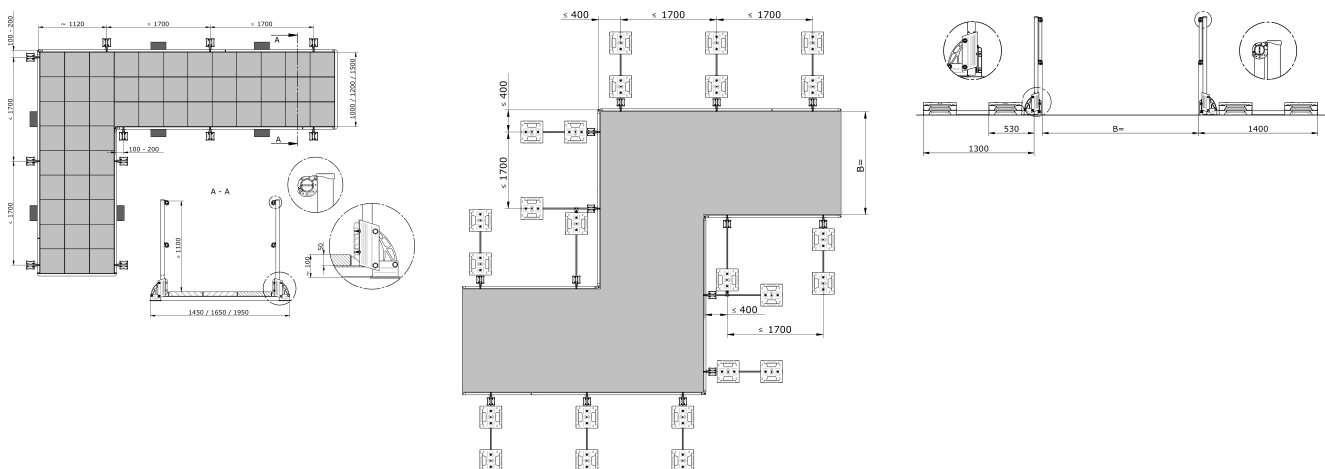
If the necessary prerequisites are fulfilled, e.g. reduction of post separation to 1,7 m, a path width of at least 700 mm, and additional measures (such as fitting toe boards), the system can be used as a standards-compliant escape route.

#### Adjustable to individual requirements

With the Vario escape route system variant, there is the option of individually adapting the escape route width to the circumstances.

#### Space-saving system

The concrete slab escape route system has no booms or concrete weights on the outside of the escape route instead, the existing concrete slabs of the path serve as the superimposed load. This therefore represents a space-saving alternative. Our standard path widths are 1450 mm, 1650 mm, and 1950 mm, but an individual adaptation is possible on request.



### State of the art certification:

DIN 14094-2:2017

## Components

### BARRIER-Z11

Rating plate BARRIER-Z11 for guardrail system

**Material:** Aluminium composite, plastic  
for marking a BARRIER system



### BARRIER-V20

Vario weight BARRIER-V20

**Height x width x length:** 93 x 390 x 390 mm  
**Weight:** 12,5 kg  
**Material:** Beton



### BARRIER-S22-1300

Standard boom BARRIER-S22-1300

**Length:** 1300 mm  
**Material:** aluminium  
Standard boom for System VARIO, escape route  
according to plan  
customised lengths on request!



### BARRIER-V12

Vario foot unit BARRIER-V12

**Material:** aluminium, stainless steel (AISI 304)  
VARIO foot unit without boom/post, for creation of a  
load-bearing collective side protection



### BARRIER-V14

Vario foot unit BARRIER-V14

**Material:**  
VARIO foot unit without boom/post, for creation of a  
load-bearing collective

New



### BARRIER-V92

Vario corner tie BARRIER-V92

**Material:** aluminium, stainless steel V2A (AISI 304)  
To connect two booms



### BARRIER-F20

Toe board BARRIER-F20

**Height x width x length:** 170 x 20 x 3000 mm  
**Material:** aluminium  
For use when no parapet higher than 150mm is  
available!



### BARRIER-F22

Toe board bracket BARRIER-F22

**Material:** aluminium, stainless steel (AISI 304)  
for fastening the BARRIER-F20 toe board to the VARIO  
BARRIER-V12 foot unit



### BARRIER-F23

Toe board connection set BARRIER-F23

**Packing unit:** 1 items  
**Material:** aluminium, stainless steel (AISI 304)  
for connecting two BARRIER-F20 toe boards



### BARRIER-F25

Toe board bracket BARRIER-F25

**Material:** aluminium, stainless steel (AISI 304)  
for fastening the BARRIER-F20 toe board to the VARIO  
BARRIER-V14 foot unit



### BARRIER-S20-1140

Standard post BARRIER-S20-1140

**Length:** 1140 mm  
**Material:** aluminium, aluminium-zinc, stainless steel  
Standard post for System VARIO including pipe retainer.



### BARRIER-R11

Aluminium pipe BARRIER-R11

**Diameter x wall thickness x length:** 36 x 2.5 x 3000 mm  
**Material:** aluminium





# Components

## BARRIER-R21

Linear tie BARRIER-R21

**Material:** aluminium, stainless steel (AISI 304)  
for connecting two BARRIER-R11 pipes



## BARRIER-R31

Corner tie BARRIER-R31

**Material:** aluminium, stainless steel (AISI 304)  
Create a corner with two pipes BARRIER-R11  
Angle free adjustable!



## BARRIER-R41

Wall tie BARRIER-R41

**Substructure:** concrete or steel construction  
**Material:** aluminium, stainless steel (AISI 304)  
Angle free adjustable!



## BARRIER-R51

End seal BARRIER-R51

**Material:** aluminium, stainless steel (AISI 304)  
end seal of two rail pipes BARRIER-R11  
Projection of the rail pipe max. 500 mm!



## BARRIER-R91

End cap BARRIER-R91

**Diameter x thickness:** 36 x 2 mm  
**Packaging unit:** 2 pieces  
**Material:** plastic  
end cap for rail pipe BARRIER-R11  
Projection of the rail pipe max. 350 mm!



## BARRIER-T30

Door set BARRIER-T30

**Material:** aluminium, stainless steel (AISI 304)  
Opening 800 mm, anchorage direction fixed, not  
selectable (right hand door)  
For load-bearing implementation, 4 x BARRIER-V20  
weights required for each door side!



## BARRIER-Z50-3000

Footway rail BARRIER-Z50-3000

**Height x width x length:** 50 x 80 x 3000 mm  
**Application:** emergency escape routes  
**Material:** aluminium  
for the creation of emergency escape routes using  
concrete slabs



## Accessory items

---

### **BARRIER-Z33-500**

Underlay mat Z33-500

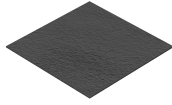
**Height x width x length:** 3 x 500 x 500 mm

**Material:** polyurethane

**Packing unit:** 1 item

underlay mat for one VARIO-BARRIER-V20

---





Head office  
**INNOTECH® Arbeitsschutz GmbH**

Laizing 10  
A 4656 Kirchham  
T +43 7619 22 1 22 - 0  
[office@innotech.at](mailto:office@innotech.at)  
[www.innotech.at](http://www.innotech.at)

Branch Office Switzerland  
**INNOTECH® Arbeitsschutz GmbH**

Seestraße 14b  
CH 5432 Neuenhof  
T +41 56 41 69 040  
[office@innotechag.ch](mailto:office@innotechag.ch)  
[www.innotechag.ch](http://www.innotechag.ch)

Branch Germany  
**INNOTECH® Arbeitsschutz GmbH**

In der Steinwiese 5  
D 57074 Siegen  
T +49 271 23 41 94 - 0  
[office@innotech.de](mailto:office@innotech.de)  
[www.innotech.de](http://www.innotech.de)