



Lifeline system

AIO

Passable

All-in-one lifeline system, passable



+43 7619 22 1 22 - 0

+49 271 23 41 94 - 0

+43 564 16 9 042 - 0

office@innotech.at

www.innotech.at

Laizing 10

A 4656 Kirchham

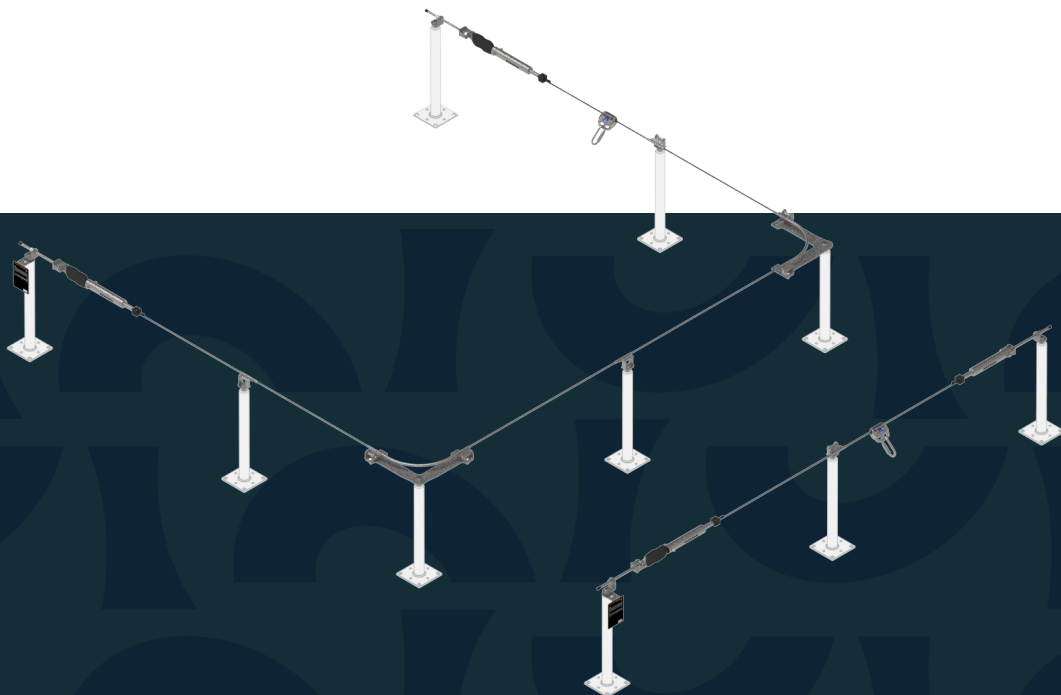
AIO-LIFELINE-SYSTEM-PASSABLE

All-in-one lifeline system, passable

The AIO LIFELINE SYSTEM PASSABLE is used wherever a horizontal surface must be protected. Regardless whether along roofs, facades, in industry or for photovoltaic systems, it provides optimum protection against falls from a height. Neither complex buildings nor the substructure represent a problem for the lifeline system, because it can be optimally attached to a wide range of substructures. The modular system components ensure installation which is both simple and defect-free. The slider makes it possible to pass over intermediate brackets and curves, thus completely avoiding inconvenient attachment and detachment. Inclusion in building lightning protection on the roof (testing as per EN 62305) is possible.

BENEFITS

- Efficient installation through wide fastening distances up to 15 m.
- Long working life thanks to robust construction and easy visual checking of cable tension through the viewing window.
- Removable slider types optimally matched to the use case.
- Fall protection and the rope access method in just one system, thanks to the combination of selected posts and abseiling positions in the lifeline system.



New fasteners for Aerocompact, Novotegra and K2 now available.



Technical product description

The system's principle component is our stable and proven 8 mm stainless steel cable. The cable, together with the various individual components, such as the passable intermediate brackets and curve elements, the end lock, and the slider for different uses matched to the system, combine to create an integrated, harmonised system. The lifeline system can be attached to a large number of substructures.



TECHNICAL BENEFITS

Reduction of installation effort

Depending on the substructure, the fastening distance can be up to 15 m. From a financial point of view, the wide fastening distances have a positive effect on the overall installation process.

Simple checking of readiness for use

The easily visible cable fastening allows a precise assessment of the cable clamping, and thus a simple inspection of the lifeline system's readiness for use (end lock with viewing window).

Consistent cable tension

The adjustable constant cable pre-tensioner is located at the end of the lifeline system. Amongst other things it ensures consistent cable tension in the event of temperature deviations.

State of the art certification:

EN 795:2012 TYP C und E

CEN/TS 16415

Components

AIO-TYP-20

Rating plate TYP-20 for lifeline systems

Material: stainless steel (AISI 316), plastic for identifying a horizontal lifeline system
Various fastening options!



AIO-TYP-21

Rating plate TYP-21 for lifeline systems

Material: stainless steel (AISI 316), plastic for identifying a self-supporting horizontal lifeline system
Various fastening options!



AIO-TYP-20-DIBt

Rating plate TYP-20-DIBt for lifeline systems

Material: stainless steel (AISI 316), plastic for identifying a horizontal lifeline system according to DIBt guidelines
Various fastening options!



SOPV-K2-TYP-AIO

Rating plate for AIO on K2 SYSTEMS

New

Dimensions: 82x 150 mm
Material: stainless steel (AISI 316), plastic for identifying a horizontal cable system on K2 SYSTEMS



SOPV-NOVO-TYP-AIO

Rating plate for AIO on NOVOTEGRA flat roof 2 base rail

New

Dimensions: 82x 150 mm
Material: stainless steel (AISI 316), plastic for identifying a horizontal cable system on NOVOTEGRA flat roof 2 base rail



SOPV-AERO-TYP-AIO

Rating plate for AIO on AEROCOMPACT

New

Dimensions: 82x 150 mm
Material: stainless steel (AISI 316), plastic for identifying a horizontal cable system on AEROCOMPACT



AIO-ENDS-10

End lock set ENDS-10 for lifeline systems

Material: stainless steel (AISI 304), aluminium (anodised)
Complete set for one cable span, constant spring pre-tension and indicator clamp!



AIO-SEIL-30

Stainless steel cable SEIL-30 for lifeline system

Dimensions: Ø 8 mm (7 x 7)
Breaking load: 37 kN
Material: stainless steel (AISI 316)
tested for INNOTECH lifeline systems



AIO-EB-10

End lock fastening EB-10 for lifeline systems

Mountable on: AIO-STA, AIO-STX, AIO-FALZ, AIO-SAND, AIO-VARIO, AIO-SYST, etc.
Connection: thread M16
Material: stainless steel (AISI 304)
for fastening the lifeline system with an end lock (AIO-ENDS-10)



AIO-EB-15

End lock fastening EB-15 for lifeline systems

Mountable on: AIO-STA, AIO-FALZ, AIO-SAND, AIO-VARIO, AIO-SYST, etc.
Connection: thread M16
Material: stainless steel (AISI 304)
for fastening the lifeline system with an end lock (AIO-ENDS-10)



AIO-SZH-10

Intermediate bracket SZH-10 for lifeline systems

Mountable on: STA, FALZ, SAND, VARIO, SYST, etc.
Connection: thread M16
Function range: 220°
Material: stainless steel (AISI 304)
For use on both sides without detaching the slider!



AIO-EDLE-50

Curve EDLE-50 for lifeline systems

Mountable on: STA, FALZ, SAND, VARIO, SYST, etc.
Pass-over capability: inside or outside corners and overhead systems
Connection: thread M16
Material: stainless steel (AISI 304)
for setting up a 90° corner set
Variably adjustable cable angle thanks to bent base plate!



Components

AIO-EDLE-50-ROHRBOGEN

Pipe bend EDLE-50 for lifeline systems

Application: AIO-EDLE-50
Material: stainless steel (AISI 304)
 for setting up a 80°, 105° or 120° corner set
Pass-over capability: only outside!



AIO-EDLE-50-O

Outside curve EDLE-50 for lifeline systems

Mountable on: STA, FALZ, SAND, VARIO, SYST, etc.
Pass-over capability: outside corner formation
Connection: thread M16
Material: stainless steel (AISI 304)
 for setting up a 90° corner set
 Variably adjustable cable angle thanks to bent base plate!



AIO-EDLE-50-I

Inside curve EDLE-50 for lifeline systems

Mountable on: STA, FALZ, SAND, VARIO, SYST, etc.
Pass-over capability: inside corner formation
Connection: thread M16
Material: stainless steel (AISI 304)
 for setting up a 90° corner set
 Variably adjustable cable angle thanks to bent base plate!



AIO-EDLE-11

Corner pass-through element EDLE-11 for lifeline

Mountable on: AIO-STA, AIO-STX, AIO-FALZ, AIO-SAND, AIO-VARIO, AIO-SYST, etc. **Pass-over capability:** inside corners **Connection:** thread M16 **Material:** stainless steel (AISI 304)
 for setting up a 135° corner set



AIO-EDLE-16

Extension tube EDLE-16 for lifeline systems

Pass-over capability: special corners
Length: 1000 / 1500 / 3000 mm
Curve corner: 0°
Material: stainless steel (AISI 316)
 Suitable bending device or flaring tool required for connecting to AIO-EDLE-12/ -13/ -17/ -18!



AIO-EDLE-16-90

Extension tube EDLE-16 for lifeline systems

Pass-over capability: special corners
Length: 1000 mm
Curve corner: 90°
Material: stainless steel (AISI 316)
 Suitable bending device or flaring tool required for connecting to AIO-EDLE-12/ -13/ -17/ -18!



AIO-EDLE-17

Corner pass-through element EDLE-17 for lifeline

Mountable on: AIO-STA, AIO-STX, AIO-FALZ, AIO-SAND, AIO-VARIO, AIO-SYST, etc.
Pass-over capability: inside or outside corners and overhead systems
Connection: thread M16
Engagement positions: 0°, 45°, 90°, 135°, 180°
Material: stainless steel (AISI 304)
 Only for usage with 2 pcs. of AIO-EDLE-16 and AIO-EDLE-18!



AIO-EDLE-18

Corner pass-through element EDLE-18 for lifeline

Mountable on: AIO-STA, AIO-STX, AIO-FALZ, AIO-SAND, AIO-VARIO, AIO-SYST, etc.
Pass-over capability: inside or outside corners and overhead systems
Connection: thread M16
Engagement positions: 0°, 45°, 90°, 135°, 180°
Material: stainless steel (AISI 304)
 Only for usage with 1 pce. of AIO-EDLE-16!



AIO-EDLE-19

Corner pass-through element EDLE-19 for lifeline

Mountable on: AIO-STA, AIO-STX, AIO-FALZ, AIO-SAND, AIO-VARIO, AIO-SYST, etc.
Pass-over capability: inside or outside corners and overhead systems
Connection: thread M16
Engagement positions: 0° / 45° / 90° / 135° / 180°
Material: stainless steel (AISI 304) **Angular displacement possible from 0° / 180° up to 135°!**
Suitable bending device or flaring tool required!



Accessory items

AIO-GLEIT-10-A4

Slider GLEIT-10 for lifeline systems

Material: stainless steel (AISI 316)
can be attached and detached at any point on the cable
in the horizontal lifeline system
free to move over all pass-through elements
(intermediate cable brackets and curves)



AIO-GLEIT-13-A4

Slider GLEIT-13 for lifeline systems

Material: stainless steel (AISI 316)
free to move over all pass-through elements
(intermediate cable brackets and curves)



AIO-GLEIT-20-A4

Slider GLEIT-20 for lifeline systems

Material: stainless steel (AISI 316)
can be attached and detached at any point on the cable
in the horizontal lifeline system
free to move over all pass-through elements
(intermediate cable brackets and curves)



SHOCK-10

Shock absorber SHOCK-10 for lifeline systems

Material: aluminium anodised
reduces the forces in the end points of an AIO lifeline
system
Enhancement of the cable deflection up to
approximately 50 cm!



SHOCK-11

Shock absorber SHOCK-11 for lifeline systems

Material: stainless steel (AISI 316)
reduces the forces in the end points of an AIO lifeline
system
Enhancement of the cable deflection up to
approximately 1000 mm!



STA-10

Unipost STA-10 for all systems

Mountable on: concrete, wood, trapezoidal supporting
sheet, steel construction, etc.
Post heights: 300/400/500/600 mm, Ø 48 mm
Base plate dimensions: 150 x 150 x 8 mm
Material: galvanised steel, stainless steel (AISI 316)



STA-12

Unipost STA-12 for all systems

Mountable on: concrete, hollow concrete slab,
trapezoidal supporting sheet, steel construction, etc.
Post height: 400 / 600 / 800 mm, Ø 48 mm
Base plate dimensions: 300 x 300 x 8 mm
Material: galvanised steel



STA-16

End and corner post STA-16 for all systems

Mountable on: concrete (anchoring depth at least 100
mm), steel construction, etc.
Post height: 200 / 500 mm, Ø 48 mm
Base plate dimensions: 150 x 192 x 8 mm
Material: galvanised steel
(use 4 pcs. of adhesive anchor bolts M12)
Special lengths upon request!



QUAD-11

Unipost QUAD-11

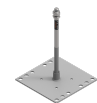
Mountable on: concrete, hollow core concrete, wood,
trapezoidal supporting sheet
Post heights: 300/400/500/600 mm, Ø 16 mm
Base plate dimensions: 235 x 235 x 4 mm
Material: stainless steel (AISI 304)



QUAD-13

Unipost QUAD-13

Mountable on: concrete, trapezoidal sheet
Post heights: 300/400/500/600 mm, Ø 16 mm
Base plate dimensions: 212 x 212 x 5 mm
Packaging unit: 1 piece / 10 pieces
Material: coated steel (RAL 7004), stainless steel (AISI
304)



EAP-QUAD-13-END

End/corner point QUAD-13-END

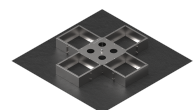
Substructure: Concrete, trapezoidal supporting sheet
Post dimensions: 400/600 mm, Ø 16 mm
Base plate size: 212 x 212 x 5 mm
Material: coated steel (RAL 7004), stainless steel V2A
(AISI 304), aluminium



VARIO-45

Universalpoint VARIO-45 for all systems

Mountable on: flat roofs up to 5° with parapet
Dimensions: 1536 x 1536 mm
Weight: approx. 21 kg (total weight 43 kg, packaging
included)
Final weight: c. 384 - 499 kg
Can be filled with: concrete or 12/15 pcs. of concrete
slabs (50 x 50 x 5 cm, 49 x 49 x 5 cm)
or 16/20 pcs. of concrete slabs (50 x 50 x 3,8 cm)
Material: stainless steel (AISI 304)
Without roof perforation!



Accessory items

EUE-101-STA-10

Set items STA-10 incl. BEF-104-A4

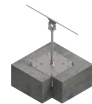
Substructure: Concrete
Post dimensions: 400/600/800 mm, Ø 48 mm
Base plate size: 150 x 150 x 8 mm
Material: galvanised steel, stainless steel V2A (AISI 304)



ZST-101-QUAD-11

Set items QUAD -11 incl. BEF-104-A4

Substructure: Concrete
Post dimensions: 400/600 mm, Ø 16 mm
Base plate size: 235 x 235 x 4 mm
Material: stainless steel V2A (AISI 304)



EUE-102-STA-12

Set items STA-12 incl. BEF-107

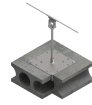
Substructure: Hollow slab
Post dimensions: 400/600/800 mm, Ø 48 mm
Base plate size: 300 x 300 x 8 mm
Material: galvanised steel



ZST-102-QUAD-11

Set items QUAD-11 incl. BEF-103

Substructure: Concrete, hollow concrete slab
Post dimensions: 400/600 mm, Ø 16 mm
Base plate size: 235 x 235 x 4 mm
Material: stainless steel V2A (AISI 304)



EUE-201-STA-10

Set items STA-10 incl. BEF-201

Substructure: Wood
Post dimensions: 400/600/800 mm, Ø 48 mm
Base plate size: 150 x 150 x 8 mm
Material: galvanised steel, stainless steel V4A (AISI 316)



ZST-201-QUAD-11

Set items QUAD-11 incl. BEF-209-A2

Substructure: Solid wood ceiling
Post dimensions: 400/600 mm, Ø 16 mm
Base plate size: 235 x 235 x 4 mm
Material: stainless steel V2A (AISI 304)



ZST-201-STA-10

Set items STA-10 incl. BEF-201

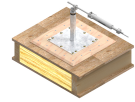
Substructure: Wooden rafters (min. 16 x 16cm)
Post dimensions: 400/600 mm, Ø 48 mm
Base plate size: 150 x 150 x 8 mm
Material: galvanised steel, stainless steel V4A (AISI 316)



EUE-202-1-STA-12

Set items STA-12 incl. BEF-210-A2

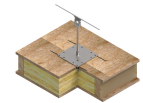
Substructure: OSB
Post dimensions: 400/600/800 mm, Ø 48 mm
Base plate size: 300 x 300 x 8 mm
Material: galvanised steel



ZST-202-1-QUAD-11

Set items QUAD-11 incl. BEF-307

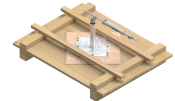
Substructure: Wood lightweight roof, OSB
Post dimensions: 400/600 mm, Ø 16 mm
Base plate size: 235 x 235 x 4 mm
Material: stainless steel V2A (AISI 304)



EUE-203-STA-12

Set items STA-12 incl. BEF-210-A2

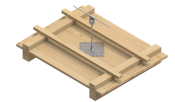
Substructure: Wood - rough formwork
Post dimensions: 400/600/800 mm, Ø 48 mm
Base plate size: 300 x 300 x 8 mm
Material: galvanised steel



ZST-203-QUAD-11

Set items QUAD-11 incl. BEF-208

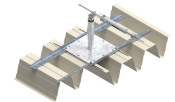
Substructure: Wood - rough formwork
Post dimensions: 400/600 mm, Ø 16 mm
Base plate size: 235 x 235 x 4 mm
Material: stainless steel V2A (AISI 304)



EUE-301-STA-12

Set items STA-12 incl. BEF-307 and BEF-307-1

Substructure: Trapezoidal supporting sheet
Post dimensions: 400/600/800 mm, Ø 48 mm
Base plate size: 300 x 300 x 8 mm
Material: galvanised steel

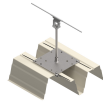


Accessory items

ZST-301-QUAD-11

Set items QUAD-11 incl. BEF-307

Substructure: Trapezoidal supporting sheet
Post dimensions: 400/600 mm, Ø 16 mm
Base plate size: 235 x 235 x 4 mm
Material: stainless steel V2A (AISI 304)



SOPV-K2-AIO-SET-10

New

Fastening set for end lock set on K2 SYSTEMS BasicRail

Length: 1995 mm
Material: aluminum, stainless steel
 For module widths of 1448-1779mm.



SOPV-K2-AIO-SET-11

New

Fastening set for end lock set on K2 SYSTEMS BasicRail

Length: 2365mm
Material: aluminum, stainless steel
 For module widths of 1780-2050m



SOPV-K2-AIO-SET-20

New

Fastening set for cable intermediate bracket on K2 SYSTEMS BasicRail

Material: aluminum, stainless steel



SOPV-K2-AIO-SET-30

New

Fastening set for EDLE / SZH / EAP on K2 SYSTEMS BasicRail

Length: 1995 mm
Material: aluminum, stainless steel
 For module widths of 1448-1779mm.



SOPV-K2-AIO-SET-31

New

Fastening set for EDLE / SZH / EAP on K2 SYSTEMS BasicRail

Length: 2365 mm
Material: aluminum, stainless steel
 For module widths of 1780-2050 mm.



SOPV-K2-AIO-SET-40

New

Extension set on K2 SYSTEMS BasicRail

Length: 1995 mm
Material: aluminum, stainless steel
 Extension set for:
 SOPV-K2-AIO-SET-10
 SOPV-K2-AIO-SET-11
 SOPV-K2-AIO-SET-30
 SOPV-K2-AIO-SET-31
 SOPV-K2-TAURUS-SET-10
 SOPV-K2-TAURUS-SET-11
 SOPV-K2-TAURUS-SET-30
 SOPV-K2-TAURUS-SET-31



SOPV-NOVO-AIO-SET-10

New

Fastening set for end lock set on NOVOTEGRA flat roof 2 base rail

Material: aluminum, stainless steel



SOPV-NOVO-AIO-SET-20

New

Fastening set for cable intermediate bracket on NOVOTEGRA flat roof 2 base rail

Material: aluminum, stainless steel



SOPV-AERO-AIO-SET-10

New

Fastening set for end lock set on AEROCOMPACT SN 2 / SN2+

Length: 1995 mm
Material: aluminum, stainless steel
 For module widths of 1448-1779mm.



SOPV-AERO-AIO-SET-11

New

Fastening set for end lock set on AEROCOMPACT SN 2 / SN2+

Length: 2365 mm
Material: aluminum, stainless steel
 For module widths of 1448-1779mm.



SOPV-AERO-AIO-SET-20

New

Fastening set for cable intermediate bracket on AEROCOMPACT SN 2 / SN2+

Material: aluminum, stainless steel



Accessory items

SOPV-AERO-AIO-SET-30 New

Fastening set for EDLE / SZH / EAP on AEROCOMPACT SN 2 / SN2+

Length: 1995 mm

Material: aluminum, stainless steel
For module widths of 1448-1779mm.



SOPV-AERO-AIO-SET-31 New

Fastening set for EDLE / SZH / EAP on AEROCOMPACT SN 2 / SN2+

Length: 2365 mm

Material: aluminum, stainless steel
For module widths of 1448-1779mm.



SOPV-AERO-AIO-SET-40 New

Extension for base rail on AEROCOMPACT SN 2 / SN2+

Length: 1755 mm

Material: aluminum, stainless steel



SOPV-AERO-AIO-SET-41 New

Extension for base rail on AEROCOMPACT SN 2 / SN2+

Length: 2195 mm

Material: aluminum, stainless steel



SOPV-AERO-VB-SET-10 New

Connector for sliding base on AEROCOMPACT SN 2 / SN2+

Material: aluminum, stainless steel



SAND-01-A2

Universal point SAND-01-A2

Substructure: Trapezoidal sheet

Material: Steel, aluminium

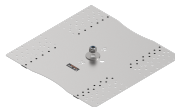
Material thickness: Steel min. 0.6 mm, aluminium min. 0.7 mm

Width profile: 250 to 414 mm

Base plate size: 430 x 415 x 1.5 mm

Material: Stainless steel V2A (AISI 304)

At the same time, order suitable fastening material (steel BEF-309/aluminium BEF-306).



SAND-13-A2

Universal point SAND-13

Substructure: Trapezoidal sheet,

material: Steel

Material thickness: min. 0.5 mm

Width profile: 210 to 330 mm

Base plate size: 300 x 365 x 2 mm

Material: Stainless steel V2A (AISI 304)

At the same time, order suitable fastening material (steel 0,5-3mm BEF-306 / steel 0,6-1,5mm BEF-310).

Use as intermediate bracket, variable height adjustment up to 50 mm (VL-20-50), to increase the spacing between the lifeline system and the roof cladding.



FALZ-45

Universal point FALZ-45

Mountable on: Standing seam roofs

Material: aluminium, copper, titanium-zinc alloy, stainless steel, galvanised steel, etc.

Material thickness: min. 0.6 mm

Width of profile: 370 - 640 mm or 520 - 790 mm

Without roof perforation!



FALZ-25

FALZ-25 intermediate point for lifeline systems

Mountable on: standing seam roofs

Material: aluminium, copper, titanium-zinc alloy, stainless steel, galvanised steel, etc.

Material thickness: min. 0.6 mm

Width of profile: 370 640 mm or 520 790 mm

Material: stainless steel (AISI 304)

Without roof perforation!

Only for use as intermediate cable bracket in AIO lifeline system!

Variable height adjustment up to 50 mm (VL-20-50) to increase the spacing between the lifeline system and the roofing!



SYST-01

Universal point SYST-01

Mountable on: (Double-) standing seam roofs

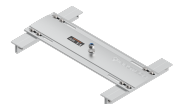
Material (material thickness): steel (min. 0.5 mm), aluminium (min. 0.7 mm)

Width of profile: 410 - 610 mm

Material: aluminium, stainless steel (AISI 304)

Pre-assembled and without roof perforation!

Not suitable for copper roofs !



SYST-04

Universal point SYST-04

Mountable: system roofs similar to INTERFALZ

Material (material thickness): steel (min. 0.5 mm), aluminium (min. 0.7 mm)

Width of profile: 305 - 333 mm or 400 - 500 mm

Material: aluminium, stainless steel (AISI 304)

Pre-assembled and without roof perforation!

For Germany, a national technical approval (abZ for construction products in the scope of the federal state building

codes) and a mark of compliance (compliance mark as per the Compliance Mark ordinance) are necessary for this product.



Accessory items

AIO-SYST-20

Universal point SYST-20

Mountable on: trapezoidal covering sheet

Material: steel, aluminium

Material thickness: min. 0.5 mm

Width of profile: 475 - 695 mm

Material: aluminium, stainless steel (AISI 304)



BIA-SET-02





Head office
INNOTECH® Arbeitsschutz GmbH

Laizing 10
A 4656 Kirchham
T +43 7619 22 1 22 - 0
office@innotech.at
www.innotech.at

Branch Office Switzerland
INNOTECH® Arbeitsschutz GmbH

Seestraße 14b
CH 5432 Neuenhof
T +41 56 41 69 040
office@innotechag.ch
www.innotechag.ch

Branch Germany
INNOTECH® Arbeitsschutz GmbH

In der Steinwiese 5
D 57074 Siegen
T +49 271 23 41 94 - 0
office@innotech.de
www.innotech.de