



Rail safety system

TAURUS

Horizontal

Rail system for horizontal use



+43 7619 22 1 22 - 0

+49 271 23 41 94 - 0

+43 564 16 9 042 - 0

office@innotech.at

www.innotech.at

Laizing 10

A 4656 Kirchham

TAURUS-HORIZONTAL

Rail system for horizontal use

The TAURUS HORIZONTAL rail system is used wherever movements along a horizontally running pathway need to be **protected from a fall risk**. Regardless whether along roofs, facades, for overhead use, in industry or in connection with photovoltaic systems, it protects against falls from height, up to an inclination of 5°. A further significant benefit of the horizontal rail system is the flexibility in positioning of anchor points for the rope access method. This is an access process for activities such as installation and cleaning tasks in locations which are difficult to reach. By means of this method, users can position themselves at specific points on a building structure by using ropes and the appropriate safety system, in order to carry out the necessary tasks there.

BENEFITS

- Great flexibility provided by the fastening option to a multiplicity of substructures (concrete, steel, wood, PV substructures, etc).
- Reduced installation effort because of rail fastener separations up to 5 m.
- Perfect mobility in the system thanks to the sliders specially developed for horizontal use (2 of them are removable).
- Simplification of rope access processes thanks to the variable anchor points (sliders) along the run of rail.



New fasteners for Aerocompact, Novotegra and K2 now available

Technical product description

The TAURUS system consists of high-quality alloyed aluminium rails. This rail, in combination with the various individual components, such as the specially developed connectors (optionally also with expansion compensation), end units, entry elements, and the individually adaptable curve elements, combine to create a harmonised system. The system can be attached to a large number of substructures. It is also compatible with many INNOTECH anchor points.



TECHNICAL BENEFITS

Rope access method

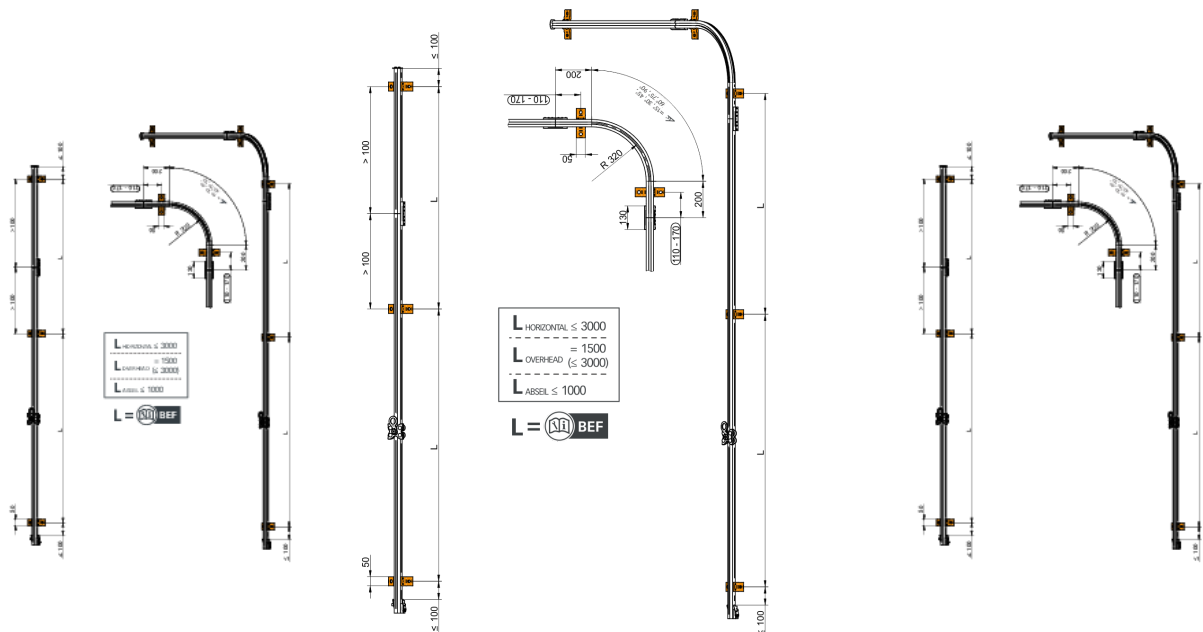
With a reduced fastening distance of 1 metre maximum, the TAURUS HORIZONTAL rail system is also certified for the rope access method.

Reduction of installation effort

When used as fall protection, a fastening separation of 3 metres applies. With additional appropriate measures, fastening distances up to 5 metres can be achieved, and in financial terms this has a positive effect on the whole installation process.

Detachable sliders

The standard slider models ensure optimum mobility in the system. In addition to the standard products, a series of HO sliders suitable for the system is also available. These are sliders which can be fitted and removed at any time anywhere along the whole run of rail.



State of the art certification:

EN 795 TYP D

CEN/TS 16415

DIBt

Components

TAURUS-TYP-10

Rating plate TYP-10 for horizontal rail system

Dimensions: 160 x 92 mm
Material: stainless steel (AISI 316), plastic
for identifying a horizontal rail system
Various fastening options!



TAURUS-TYP-11

Rating plate TYP-11 for horizontal rail system

Dimensions: 160 x 92 mm
Material: stainless steel (AISI 316), plastic
for identifying a horizontal, self supporting rail system
Various fastening options!



TAURUS-TYP-40

Rating plate TYP-40 for Allround rail system

Dimensions: 160 x 92 mm
Material: stainless steel (AISI 316), plastic
for identifying an all-round rail system (vertical and horizontal)
Various fastening options!



SOPV-K2-TYP-TAURUS

Rating plate for TAURUS on K2 SYSTEMS

New

Dimensions: 150 x 82 mm
Material: stainless steel (AISI 316), plastic
for identifying a horizontal rail system on K2 SYSTEMS



SOPV-NOVO-TYP-TAURUS

Rating plate for TAURUS on NOVOTEGRA flat roof 2 base rail

New

Dimensions: 150 x 82 mm
Material: stainless steel (AISI 316), plastic
for identifying a horizontal rail system on NOVOTEGRA flat roof 2 base rail



SOPV-AERO-TYP-TAURUS

Rating plate for TAURUS on AEROCOMPACT

New

Dimensions: 150 x 82 mm
Material: stainless steel (AISI 316), plastic
for identifying a horizontal rail system on AEROCOMPACT



TAURUS-RAIL-10

Rail RAIL-10 for rail system

Length: 3000 / 6000 mm
Material: aluminium
rail element with a straight run



TAURUS-RAIL-20

Rail curve RAIL-20 for rail system

Inclination: 15°, 30°, 45°, 60°, 75°, 90°
Material: aluminium
Always install rail fastening (TAURUS-BEF) on the rail curved corner!



TAURUS-RAIL-30

Outer rail bend RAIL-30 for rail systems

Inclination: 90°
Material: aluminium
rail element for vertical and horizontal (facade) usage
Always install rail fastening (TAURUS-BEF) on the rail curved corner!



TAURUS-RAIL-40

Inner rail bend RAIL-40 for rail systems

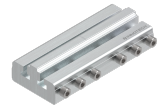
Inclination: 90°
Material: aluminium
rail element for vertical and horizontal (facade) usage
Always install rail fastening (TAURUS-BEF) on the rail curved corner!



TAURUS-VB-10

Rail connector VB-10 for rail systems

Packaging unit: 1 piece / 5 pieces
Material: aluminium
connecting element for alignment of two TAURUS-RAIL elements



TAURUS-VB-11

Connector VB-11

Packaging unit: 1 Stück
Material: aluminium
Connector for two TAURUS-RAIL- rail elements with elongation adjustment



Components

TAURUS-VB-12

Rail connection VB-12 for rail systems

Packaging unit: 2 pieces / 10 pieces

Material: galvanised steel
for the alignment of two TAURUS-RAIL elements
rail connection must only be used together with
TAURUS-BEF-12!



TAURUS-VB-13

Tension pin TAURUS-VB-13

Material: stainless steel V2A
Tension pin for Taurus 5m



TAURUS-EA-10

Rail end closure EA-10 for rail systems

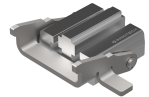
Material: stainless steel (AISI 304)
no access to the system possible (end of the rail)



TAURUS-EA-11

Rail end closure EA-11 for rail systems

Material: stainless steel (AISI 304), aluminium
To step-in and step-out of TAURUS-GLEIT!



Accessory items

TAURUS-BEF-10

Rail fastener BEF-10 for rail systems

Mountable on: concrete, facade, steel construction

Packaging unit: 1 piece / 5 pieces

Material: aluminium
for fastening TAURUS-RAIL on concrete, facade and
steel construction



TAURUS-BEF-12

Rail fastener BEF-12 for rail systems

Mountable on: steel construction

Packaging unit: 5 pieces

Material: stainless steel (AISI 304)
for fastening TAURUS-RAIL on steel construction



TAURUS-BEF-13

Rail fastener BEF-13 for rail systems

Mountable on: steel construction

Packaging unit: 5 pieces

Material: stainless steel (AISI 304)
for fastening TAURUS-RAIL on steel construction



Accessory items

TAURUS-BEF-20

Rail fastener BEF-20 for rail systems

Mountable on: concrete, facade
Through boreholes: 120 mm
For mounting on concrete: 2 pcs. of adhesive anchors
Minimum drill depth for concrete: 100 mm
Material: stainless steel (AISI 304)
 for fastening TAURUS-RAIL on concrete and facade



TAURUS-BEF-21

Rail fastener BEF-21 for rail systems

Substructure: concrete, steel construction
Installation depth concrete: min. 125 mm
Material: stainless steel V2A (AISI 304)
 to attach the TAURUS-RAIL on to concrete and steel construction



TAURUS-BEF-30

Rail fastener BEF-30 for rail systems

Mountable on: STA post, concrete
Material: stainless steel (AISI 304)
 for fastening TAURUS-RAIL on STA post



TAURUS-BEF-41

Rail fastener BEF-41 for rail systems

Mountable on: wood (min. 16/16 cm and accordingly the instruction manual)
Material: stainless steel (AISI 304)
 for attaching TAURUS-RAIL to wood



SOPV-K2-TAURUS-SET-10

New

Fastening set for Taurus on K2 SYSTEMS BasicRail

Length: 1995 mm
Material: aluminum, stainless steel
 For module widths of 1448-1779mm.



SOPV-K2-TAURUS-SET-11

New

Fastening set for Taurus on K2 SYSTEMS BasicRail

Length: 2365 mm
Material: aluminum, stainless steel
 For module widths of 1780-2150 mm.



SOPV-K2-TAURUS-SET-20

New

Fastening set for Taurus on K2 SYSTEMS BasicRail

Material: aluminum, stainless steel



SOPV-K2-TAURUS-SET-30

New

Fastening set for Taurus on K2 SYSTEMS BasicRail

Length: 1995 mm
Material: aluminum, stainless steel
 For module widths of 1448-1779mm.



SOPV-K2-TAURUS-SET-31

New

Fastening set for Taurus on K2 SYSTEMS BasicRail

Length: 2365 mm
Material: aluminum, stainless steel
 For module widths of 1780-2150 mm.



SOPV-NOVO-TAURUS-SET-10

New

Fastening set for Taurus on NOVOTEGRA flat roof 2 base rail

Material: aluminum, stainless steel



SOPV-K2-TAURUS-SET-30

New

Fastening set for Taurus on NOVOTEGRA flat roof 2 base rail

Material: aluminum, stainless steel



SOPV-K2-TAURUS-SET-10

New

Fastening set for Taurus on AEROCOMPACT SN 2 / SN2+

Length: 1995 mm
Material: aluminum, stainless steel
 For module widths of 1448-1779mm.



Accessory items

SOPV-AERO-TAURUS-SET-11

New

Fastening set for Taurus on AEROCOMPACT SN 2 / SN2+

Length: 1995 mm

Material: aluminum, stainless steel
For module widths of 1448-1779mm.



SOPV-AERO-TAURUS-SET-20

New

Fastening set for Taurus on AEROCOMPACT SN 2 / SN2+

Material: aluminum, stainless steel



SOPV-AERO-VB-SET-10

New

Connector for sliding base on AEROCOMPACT SN 2 / SN2+

Material: aluminum, stainless steel



TAURUS-Z-92

Drilling template TAURUS-Z-91

Material: stainless steel V2A (AISI 304), steel, aluminium
Drilling template for TAURUS-VB-11



TAURUS-Z-91

Drilling template TAURUS-Z-91

Material: stainless steel V2A (AISI 304), steel
Drilling template for Taurus 5m



TAURUS-DW-10

Turntable gate DW-10 for rail systems

Material: aluminium, stainless steel (AISI 304)
Star handle for an additional rail access (T-application, 2x90°).
Can be realised as accesslexit element in combination with TAURUS-EA-11 without interrupting the rail track.



TAURUS-GLEIT-H-11

Slider H-11 for rail systems

Inclination range: +/- 5°
Material: stainless steel (AISI 304)
rail slider for horizontal usage
Suitable for overhead systems!



TAURUS-GLEIT-A-31

Slider A-31 for rail systems

Material: stainless steel (AISI 304)
Rail slider including a shock absorbing element for the vertical usage and an additional anchorage eye for the horizontal usage.



TAURUS-BEND-10

Taurus bending device for Taurus rail

Bending device for TAURUS-RAIL-20/-30/-40
Bending angle = 0° - 85°
flexible installation of the rails directly on site
space saving packaging in a case and easy to transport





Head office
INNOTECH® Arbeitsschutz GmbH

Laizing 10
A 4656 Kirchham
T +43 7619 22 1 22 - 0
office@innotech.at
www.innotech.at

Branch Office Switzerland
INNOTECH® Arbeitsschutz GmbH

Seestraße 14b
CH 5432 Neuenhof
T +41 56 41 69 040
office@innotechag.ch
www.innotechag.ch

Branch Germany
INNOTECH® Arbeitsschutz GmbH

In der Steinwiese 5
D 57074 Siegen
T +49 271 23 41 94 - 0
office@innotech.de
www.innotech.de