



Rail safety system

TAURUS

Allround

Rail system for all-round use



+43 7619 22 1 22 - 0

+49 271 23 41 94 - 0

+43 564 16 9 042 - 0

office@innotech.at

www.innotech.at

Laizing 10

A 4656 Kirchham

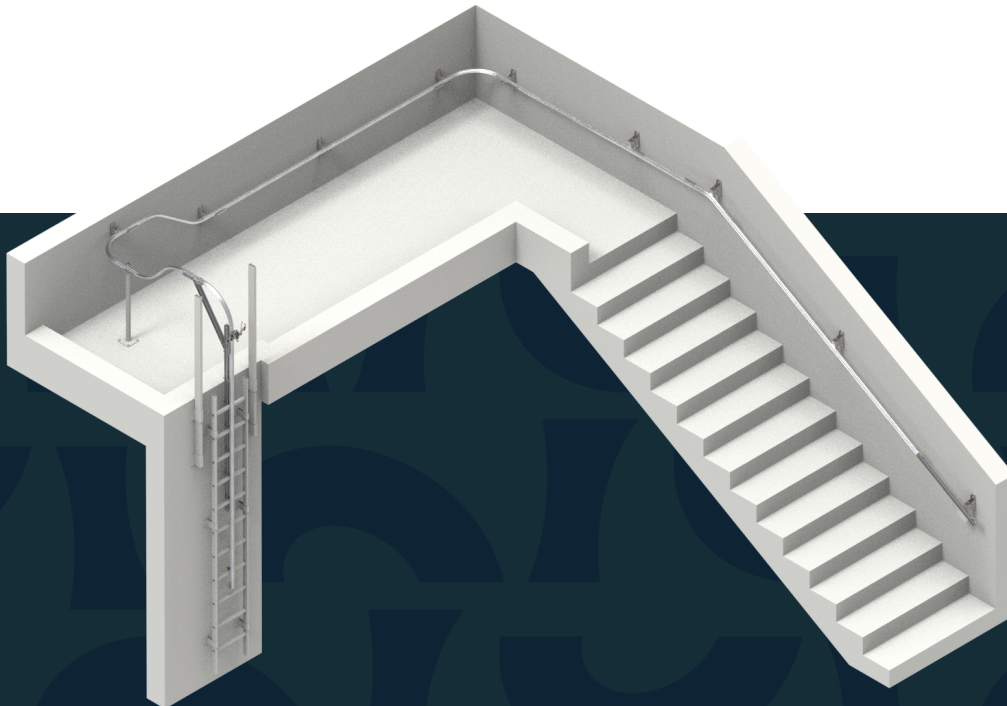
TAURUS-ALLROUND

Rail system for all-round use

The TAURUS ALLROUND rail system combines the application range and benefits of TAURUS HORIZONTAL and VERTICAL in the form of a flowing transition between horizontal and vertical movement. Regardless whether industrial buildings, architecturally challenging building structures, or maintenance walkways, it reliably protects against falls. Inclinations greater than 5° and the change from the horizontal to the vertical plane present no problems to the rail system. It protects the user continuously in all planes, and also during transitions which take place between these planes. Safety problems under complex constructional circumstances are therefore a thing of the past.

BENEFITS

- High rail adaptability, so complex constructional circumstances can be made safe.
- Little installation effort, thanks to versatile fastening options and wide fastening distances.
- Great user convenience because of the slider, curves, and bends, whether travelling horizontally or vertically, yet in the event of a fall all directions are blocked.
- The slider adapts to the speed of the protected person, and thus allows controlled movement along the rail system.



Currently no updates for this product

Technical product description

The TAURUS system consists of high-quality alloyed aluminium rails. This rail, in combination with the various individual components, such as the specially developed connectors (including expansion compensation), end units, entry elements, and the individually adaptable curve elements, combine to create a harmonised system. The system can be attached to a large number of substructures. It is also compatible with many INNOTECH anchor points.



TECHNICAL BENEFITS

Reduction of installation effort

A fastening separation of 3 metres applies. With additional appropriate measures, fastening distances up to 5 metres can be achieved, and in financial terms this has a positive effect on the whole installation process.

Practical transition

The adaptable curve elements create a coherent all-round system by linking the horizontal with the vertical, as well as covering inclinations between 5° and 90°.

Continuous protection

The TAURUS-GLEIT-A31 provides even more safety in the system. Thanks to the slider, there is no need for dangerous detachment from the system. This enables safe movement along horizontal, vertical, or even inclined rail runs. The slider has an integrated energy absorber which reduces the force acting on the user to 6 kN maximum.

State of the art certification:

EN 795 TYP D
CEN/TS 16415
EN 353-1
DIBt

Components

TAURUS-TYP-30

Rating plate TYP-30 for Allround rail system

Dimensions: 160 x 92 mm
Material: stainless steel (AISI 316), plastic
for identifying an all-round rail system (vertical and horizontal)
Various fastening options!



TAURUS-TYP-35

Information sign TYP-35 for Allround rail system

Dimensions: 160 x 92 mm
Material: stainless steel (AISI 316), plastic
information sign for an all-round rail system (vertical and horizontal)
that is fixed on the transition from vertical to horizontal.



TAURUS-TYP-40

Rating plate TYP-40 for Allround rail system

Dimensions: 160 x 92 mm
Material: stainless steel (AISI 316), plastic
for identifying an all-round rail system (vertical and horizontal)
Various fastening options!



TAURUS-RAIL-10

Rail RAIL-10 for rail system

Length: 3000 / 6000 mm
Material: aluminium
rail element with a straight run



TAURUS-RAIL-20

Rail curve RAIL-20 for rail system

Inclination: 15°, 30°, 45°, 60°, 75°, 90°
Material: aluminium
Always install rail fastening (TAURUS-BEF) on the rail curved corner!



TAURUS-RAIL-30

Outer rail bend RAIL-30 for rail systems

Inclination: 90°
Material: aluminium
rail element for vertical and horizontal (facade) usage
Always install rail fastening (TAURUS-BEF) on the rail curved corner!



TAURUS-RAIL-40

Inner rail bend RAIL-40 for rail systems

Inclination: 90°
Material: aluminium
rail element for vertical and horizontal (facade) usage
Always install rail fastening (TAURUS-BEF) on the rail curved corner!



TAURUS-VB-10

Rail connector VB-10 for rail systems

Packaging unit: 1 piece / 5 pieces
Material: aluminium
connecting element for alignment of two TAURUS-RAIL elements



TAURUS-VB-11

Connector VB-11

Packaging unit: 1 Stück
Material: aluminium
Connector for two TAURUS-RAIL- rail elements with elongation adjustment



TAURUS-VB-12

Rail connection VB-12 for rail systems

Packaging unit: 2 pieces / 10 pieces
Material: galvanised steel
for the alignment of two TAURUS-RAIL elements
rail connection must only be used together with TAURUS-BEF-12!



TAURUS-VB-13

Tension pin TAURUS-VB-13

Material: stainless steel V2A
Tension pin for Taurus 5m



TAURUS-EA-10

Rail end closure EA-10 for rail systems

Material: stainless steel (AISI 304)
no access to the system possible (end of the rail)

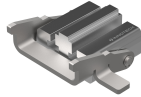


Components

TAURUS-EA-11

Rail end closure EA-11 for rail systems

Material: stainless steel (AISI 304), aluminium
To step-in and step-out of TAURUS-GLEIT!

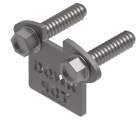


TAURUS-EA-21

Entry plate TAURUS-EA-21

Packaging unit: 1 pieces

Material: stainless steel V2A (AISI 304)
To guarantee a correct and safe installation of a TAURUS-GLEIT-V-21 in a TAURUS-vertical safety system



Accessory items

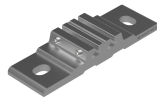
TAURUS-BEF-10

Rail fastener BEF-10 for rail systems

Mountable on: concrete, facade, steel construction

Packaging unit: 1 piece / 5 pieces

Material: aluminium
for fastening TAURUS-RAIL on concrete, facade and steel construction



TAURUS-BEF-12

Rail fastener BEF-12 for rail systems

Mountable on: steel construction

Packaging unit: 5 pieces

Material: stainless steel (AISI 304)
for fastening TAURUS-RAIL on steel construction



TAURUS-BEF-13

Rail fastener BEF-13 for rail systems

Mountable on: steel construction

Packaging unit: 5 pieces

Material: stainless steel (AISI 304)
for fastening TAURUS-RAIL on steel construction



TAURUS-BEF-20

Rail fastener BEF-20 for rail systems

Mountable on: concrete, facade

Through boreholes: 120 mm

For mounting on concrete: 2 pcs. of adhesive anchors

Minimum drill depth for concrete: 100 mm

Material: stainless steel (AISI 304)
for fastening TAURUS-RAIL on concrete and facade



TAURUS-BEF-21

Rail fastener BEF-21 for rail systems

Substructure: concrete, steel construction

Installation depth concrete: min. 125 mm

Material: stainless steel V2A (AISI 304)
to attach the TAURUS-RAIL on to concrete and steel construction



Accessory items

TAURUS-BEF-30

Rail fastener BEF-30 for rail systems

Mountable on: STA post, concrete
Material: stainless steel (AISI 304)
 for fastening TAURUS-RAIL on STA post



TAURUS-BEF-41

Rail fastener BEF-41 for rail systems

Mountable on: wood (min. 16/16 cm and accordingly the instruction manual)
Material: stainless steel (AISI 304)
 for attaching TAURUS-RAIL to wood



TAURUS-BEF-90

Rail fastener BEF-90 for rail systems

Mountable on:
run dimension: max. Ø 45 mm
Material: stainless steel (AISI 304)
 for fastening TAURUS-RAIL on ladders



TAURUS-Z-92

Drilling template TAURUS-Z-91

Material: stainless steel V2A (AISI 304), steel, aluminium
 Drilling template for TAURUS-VB-11



TAURUS-Z-91

Drilling template TAURUS-Z-91

Material: stainless steel V2A (AISI 304), steel
 Drilling template for Taurus 5m



TAURUS-DW-10

Turntable gate DW-10 for rail systems

Material: aluminium, stainless steel (AISI 304)
 Star handle for an additional rail access (T-application, 2x90°).
 Can be realised as accesslexit element in combination with TAURUS-EA-11 without interrupting the rail track.



TAURUS-GLEIT-A-31

Slider A-31 for rail systems

Material: stainless steel (AISI 304)
 Rail slider including a shock absorbing element for the vertical usage and an additional anchorage eye for the horizontal usage.



TAURUS-BEND-10

Taurus bending device for Taurus rail

Bending device for TAURUS-RAIL-20/-30/-40
 Bending angle = 0° - 85°
 flexible installation of the rails directly on site
 space saving packaging in a case and easy to transport





Head office
INNOTECH® Arbeitsschutz GmbH

Laizing 10
A 4656 Kirchham
T +43 7619 22 1 22 - 0
office@innotech.at
www.innotech.at

Branch Office Switzerland
INNOTECH® Arbeitsschutz GmbH

Seestraße 14b
CH 5432 Neuenhof
T +41 56 41 69 040
office@innotechag.ch
www.innotechag.ch

Branch Germany
INNOTECH® Arbeitsschutz GmbH

In der Steinwiese 5
D 57074 Siegen
T +49 271 23 41 94 - 0
office@innotech.de
www.innotech.de